

SECTION I, PART III

MODEL 271 GEAR-DRIVE

Transmission addition on Model 271 is illustrated below. Other changes on individual items are as follows:

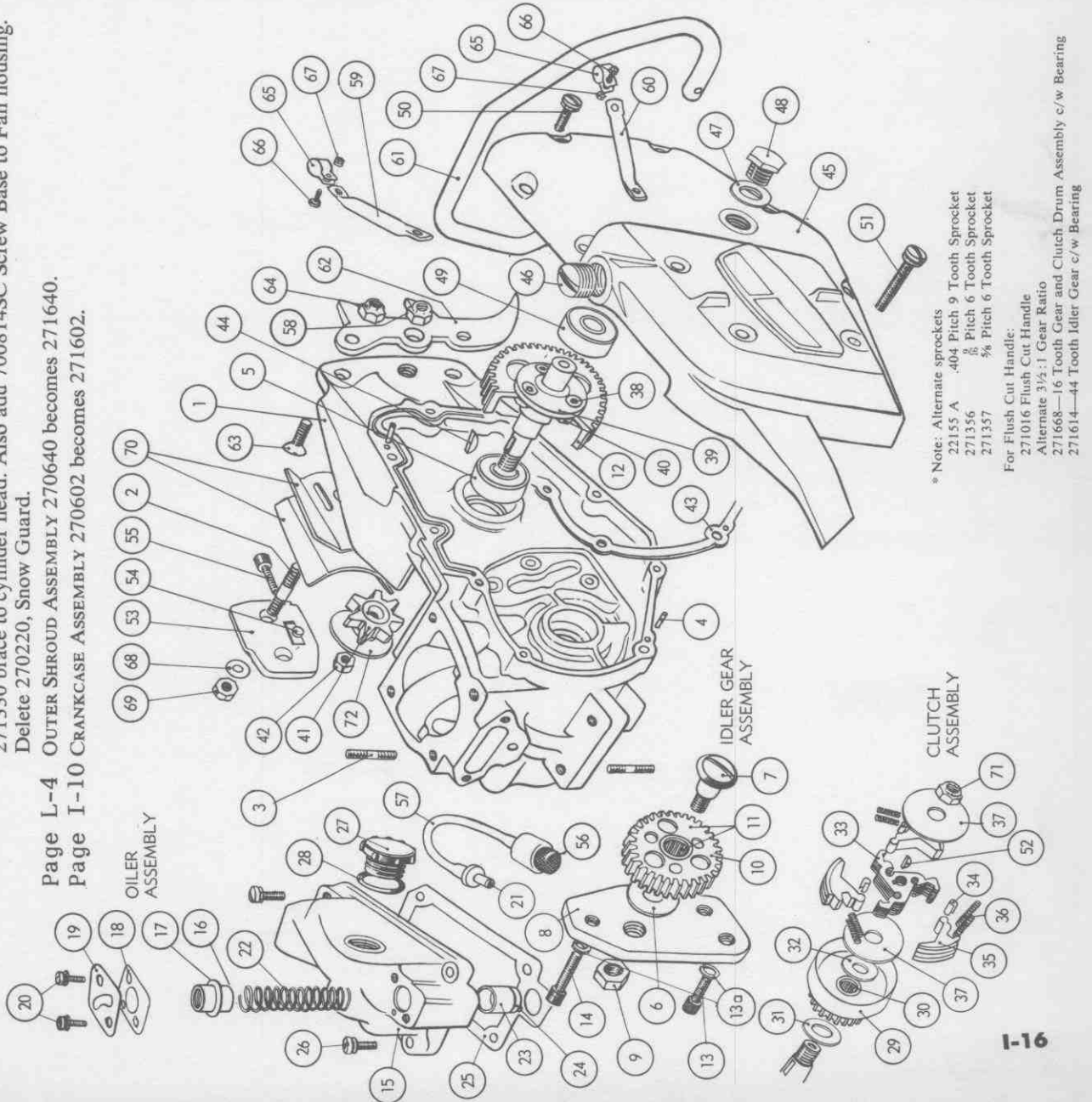
Page M-3 CHAIN OILER is as illustrated at left.

Page G-5 CLUTCH is as illustrated lower left.

Page L-4 GAS TANK—the brace 270329 is replaced by 271329 brace to fan housing and 271330 brace to cylinder head. Also add 700814SC Screw Base to Fan housing. Delete 270220, Snow Guard.

Page L-4 OUTER SHROUD ASSEMBLY 270640 becomes 271640.

Page I-10 CRANKCASE ASSEMBLY 270602 becomes 271602.

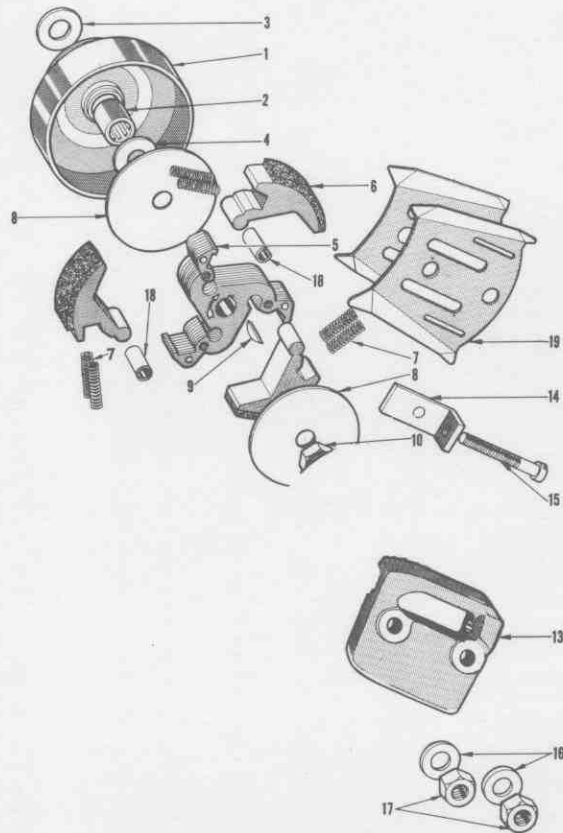


* Note: Alternate sprockets
 22155 A .404 Pitch 9 Tooth Sprocket
 271356 8 Pitch 6 Tooth Sprocket
 271357 ¼ Pitch 6 Tooth Sprocket
 For Flush Cut Handle:
 271016 Flush Cut Handle
 Alternate 3/2:1 Gear Ratio
 271668—16 Tooth Gear and Clutch Drum Assembly c/w Bearing
 271614—44 Tooth Idler Gear c/w Bearing

Item No.	Part No.	Description
1	271602	Crankcase Ass'y c/w Studs
2	271013	Stud—Bar (2 used)
3	270023	Stud—Cyl. Base (4 used)
4	16057	Dowel (2 used)
5	271018	Bearing—Drive Shaft—Crankcase
6	271144	Washer—Idler Bearing Spacer
7	271143	Bolt—Idler Gear
8	271142	Mounting Plate—Idler Gear
9	850166 L.H.	Nut—Idler Bolt (L.H.)
10	271615	Idler Gear 22140 c/w Bearing
11	22115 A	Bearing Idler Gear
12	22141	37 Tooth Gear
13	761064	Short Screw—Gear Mounting Plate (2 used)
13a	854214	Spring Lock Washer (3 used)
14	762064	Long Screw—Gear Mounting Plate
15	271635	Oil Tank Cover Ass'y
16	271636	Oil Cartridge Ass'y
17	16061	'O' Ring—Cartridge
18	271252	Gasket—Valve Plate
19	271254	Cover Plate—Oil Valve
20	725810 C	Screw—Valve Plate to Cover (2 used)
21	271627	Connector—Oil Pickup
22	16513	Spring—Piston
23	270260	Piston—Oil Pump
24	16061	'O' Ring—Oil Piston
25	271251	Gasket—Oil Tank Cover
26	726210 1	Screw—Oil Tank Cover (4 used)
27	271255	Oiler Filler Cap
28	271258	Gasket—Oil Filler Cap
29	271645	Clutch Drum Ass'y c/w Brg.
30	270353	Bearing—21 T. Gear
31	19029	Washer—Inside Thrust
32	19035	Washer—Outside Thrust
33	270643	Clutch Driver Ass'y c/w Shims
34	270369	Sleeve—Clutch Shoe Shim (3 used)
35	271646	Clutch Shoe Ass'y (3 used)
36	270363	Spring—Clutch (6 used)
37	270364	Side Plate—Clutch (2 used)
38	750864	Screw—Sprocket Shaft to Gear (3 used)
39	22138	Sprocket Shaft
40	850464	Nut—Sprocket Shaft to Gear (3 used)
41	22117 A	½" Pitch Sprocket 7 Tooth *
42	850468	Nut—Sprocket Shaft
43	271021	Gasket—C/Case to Gear Box Cover
44	856505	Key—Sprocket
45	271019	Cover—Gear Box
46	22121	Filler Plug—Gear Oil
47	13183	Fibre Washer—Level Plug
48	10192	Level Plug—Gear Box Cover
49	271020	Bearing—Drive Shaft to Gear Box Cover
50	726210	Screw—Short-Gear Box Cover to Crankcase (6 used)
51	728210	Screw—Long-Gear Box Cover to Crankcase (3 used)
52	856405	Key—Clutch
53	271666	Guide Bar Pad Ass'y c/w Adjuster
54	270649	Adjuster Ass'y
55	737814 S	Screw—Chain Adjusting
56	271629	Oil Pickup Head Ass'y
57	270270	Hose—Oil Pickup
58	850116	Nut Jam
59	271329	Brace—Handle to Fan Housing
60	271330	Brace—Handle to Cylinder Head
61	270325	Front Handle
62	270340	Bucking Spike—Western
63	741464	Screw—Bucking Spike (2 used)
64	850364	Nut—Bucking Spike (2 used)
65	270328	Clamp—Front Handle (2 used)
66	700814 C	Screw—Clamp (2 used)
67	850414 C	Nut—Clamp Screw (2 used)
68	855916 C	Washer—Bar (2 used)
69	850066 C	Nut—Bar (2 used)
70	21123	Guide Plate (2 used)
71	850467 L.H.	Nut—Crankshaft (2 used)
72	271349	Sprocket Side Plate

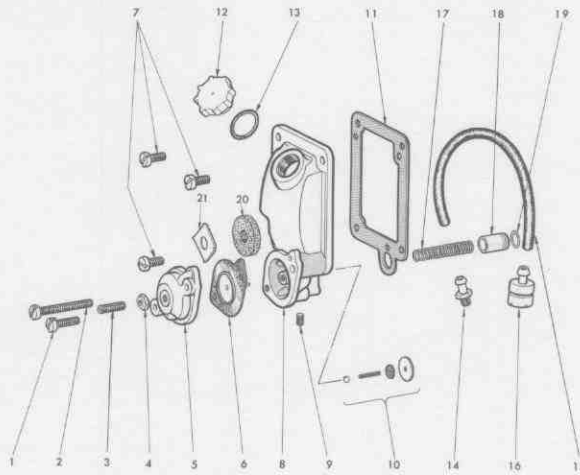
MODEL 175 CLUTCH (Obsolete)

Use Model 270 Clutch Page G5 Plus Items Listed Below



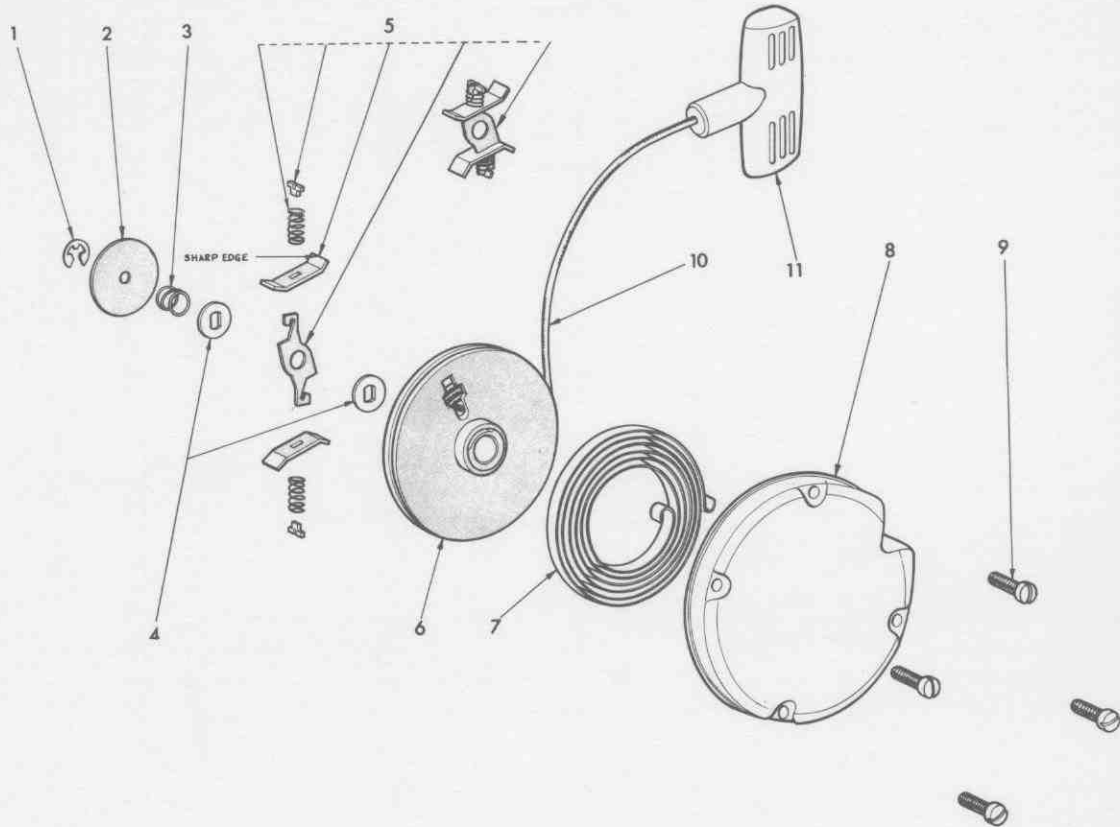
REF. NO.	PART NO.	DESCRIPTION
1	270645	7 tooth Sprocket (drum & bearing)
	270653	8 tooth Sprocket (drum & bearing)
2	270348	Bearing (2 used)
12	271666	Guide Bar Pad Assy. (includes **)
13	** 22113	Guide Bar Pad
14	**270649	Chain Tensioner Assembly
15	**737814	Chain Tensioner Screw
16	855916	Bar Washer (2 used)
17	850066	Bar Nut (2 used)
19	21123	Guide Plates (2 used)

MODEL 175 AND 270 OIL PUMPS



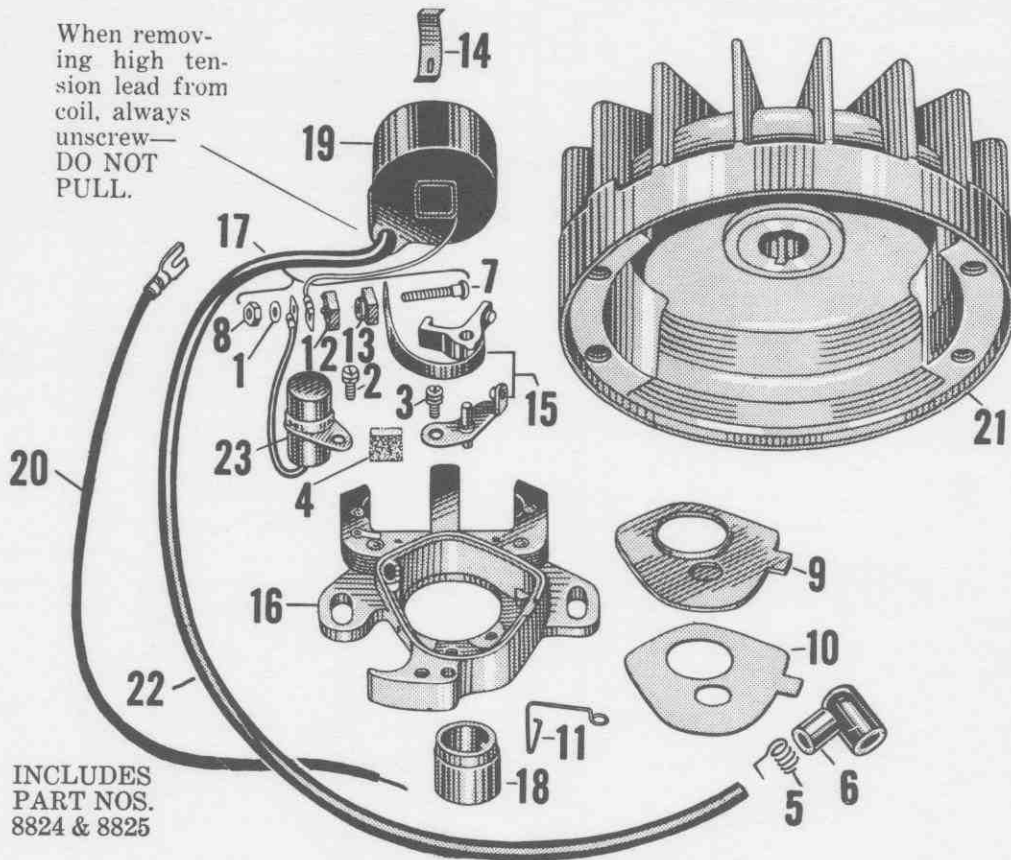
Ref. No.	Part No.	Description
1	**725810	Diaphragm Cover Screw (short)
2	**727810	Diaphragm Cover screw (long)
3	*781260	Adjusting Screw
4	*850260	Lock Nut
5	**275611	Diaphragm Cover Assy. (includes *)
6	**275613	Oiler Piston and Diaphragm Assy.
7	725810	Cover Screw (3 used)
8	270622	Oil Tank Cover Assy. (includes **)
9	**780410	Set Screw
10	**275718	Oiler Valve Repair Kit
11	270246	Gasket
12	270638	Oiler Filler Cap Assembly
13	270258	Oiler Filler Cap Gasket
14	271627	Oil Pick-up Connector
15	270270	Oil Pick-up Hose
16	271629	Oil Pick-up Head Assembly
17	16513	Oiler Spring
18	270260	Oiler Piston
19	16061	'O' Ring
20	270286	Filter
21	270287	Retainer
22	276079	Gasket (2 used)

MODEL 175, 270 AND 271 STARTER



Ref. No.	Part No.	Description
	21082	Starter Complete
1	29-3	Retainer Ring
2	27-8	Brake Retainer Washer
3	20-3	Brake Spring
4	27-80	Brake Washer (2 used)
5	111-71	Replacement Pawl Assembly
6	13-10	Rotor
7	20-1	Rewind Spring
8	151-310	Cover
9	726810	Cover Screw (4 used)
10	40-2	Starter Cord
11	144-20	"T" Handle (includes *)
12	*25-55	Handle Pin

MODEL 175, 270 AND 271 MAGNETO



INCLUDES
PART NOS.
8824 & 8825

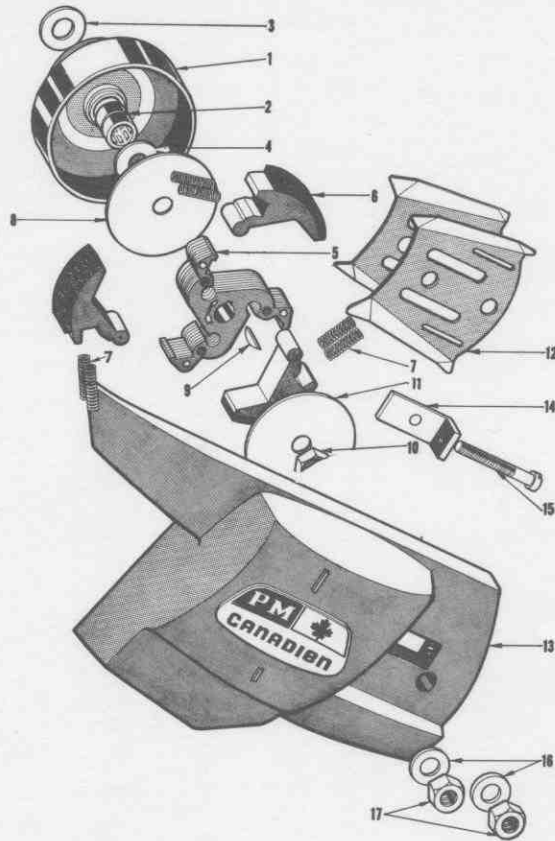
Points - .020"

Plug - .025"

Timing - 30° advance

Ref. No.	Part No.	Description
	270601	Magneto assembly complete
	X11189	Stator assembly complete (includes *)
1	* M-90X	Ground lead clamp nut lockwasher
2	* 5431	Condenser clamp screw assembly
3	* 5900	Fixed contact clamp screw assembly
4	* 14531	Cam wiper felt
5	* 8824	Terminal spring
6	* 8825	Terminal spring cover
7	* 9996	Connection stud
8	* 11015	Ground lead clamp nut
9	* 11018	Cover
10	* 11019	Gasket
11	* 11024	Breaker box cover spring
12	* 11025	Connection stud insulator (outside)
13	* 11027	Connection stud insulator (inside)
14	* 11028	Coil wedge spring
15	* X16529)	Breaker point set
16	* X11060	Stator plate group (plate & coil core only)
17	X11061	Terminal connection unit
18	11084	Breaker cam
19	* X12920	Coil group
20	X12988	Switch wire (includes grommet and terminals)
21	Y11282B	Rotor
22	* X12004	High tension lead group
23	* X12508	Condenser group
24	270081	Grommet
25	6388	Ring retainer (points)

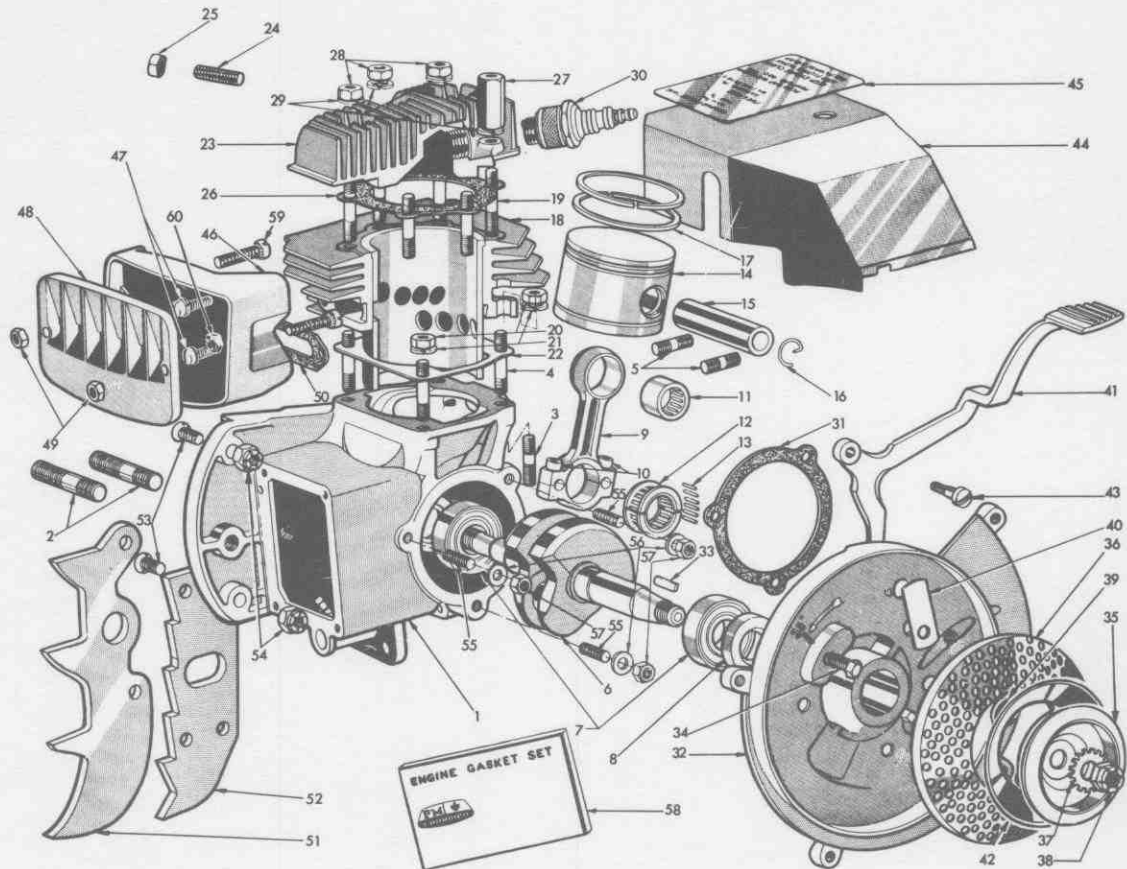
MODEL 175, 270 AND 275 (KEYED DRIVE) CLUTCH



REF. NO.	PART NO.	DESCRIPTION
1	270645	7 Tooth Sprocket (drum & bearing)
	270653	8 Tooth Sprocket (drum & bearing)
2	270348	Sprocket Bearing (2 used)
3	19029	Thrust Washer
4	19035	Thrust Washer
	175647	Clutch Assy. (includes *)
5	*275643	Clutch Driver
6	*275654	Clutch Shoe Assembly (3 used)
7	*270363	Spring (6 used)
8	*270364	Side Plate
9	856405	Clutch Key
10	850467LC	Crankshaft Nut
11	275364	Clutch Cover
12	21123	Guide Plate (2 used)
13	270648	Chain Cover Assy. (includes **)
14	**270649	Chain Tensioner Assembly
15	**737814S	Chain Tensioner Screw
16	855916C	Bar Washer (2 used)
17	850066C	Bar Nut (2 used)

SECTION I, PART I

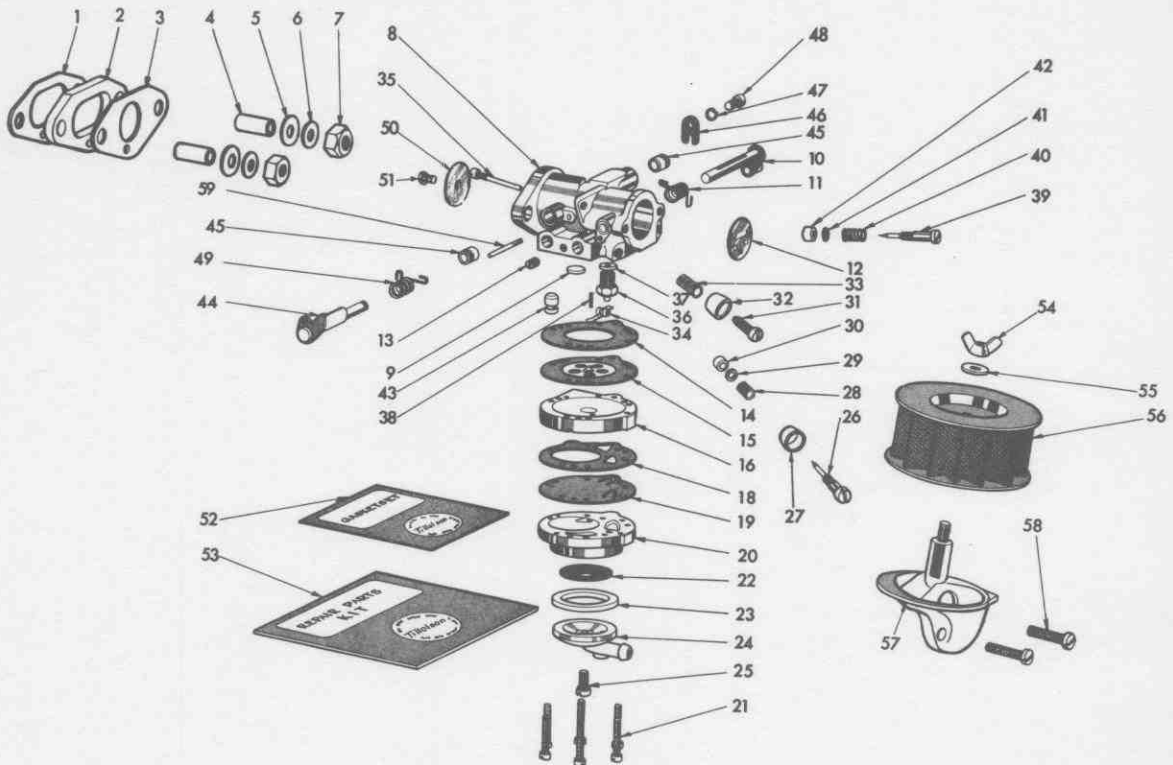
MODEL 270 AND 271 ENGINE



REF. NO.	PART NO.	DESCRIPTION	REF. NO.	PART NO.	DESCRIPTION
1	270602	Crankcase Assembly (includes*)	31	270074	Stator Backing Plate Gasket
2	*270013	Bar Stud (2 used)	32	270075	Stator Backing Plate
3	*270010	Tank Stud (2 used)	33	21088	Rotor Key
4	*270023	Cylinder Block Stud (4 used)	34	706014	Stator Screws (2 used)
5	*270012	Carburetor Stud (2 used)	35	270126	Starter Cup
6	270025	Crankshaft	36	270127	Starter Screen
7	270030	Main Bearing (2 used)	37	854117	Starter Cup Washer
8	270033	Crankshaft Seal (2 used)	38	850467	Crankshaft Nut
9	270606	Con Rod Assembly (includes **)	39	270081	Switch Wire Grommet
10	**761060-8	Con Rod Cap Screw (2 used)	40	270076	Retainer
11	**270041	Con Rod Small End Bearing	41	270290	Oiler Lever
12	270605	Con Rod Big End Brg. (c/w needles)	42	270128	Starter Cup Shield
13	21026	Con Rod Big End Needle (2 used)	43	270291	Pivot Screw
14	270045	Piston	44	270618	Inner Shroud
15	21017	Wrist Pin	45	270307	Instruction Decal
16	270047	Wrist Pin Retainer Clip (2 used)	46	270617	Exhaust Manifold Body
17	270050	Piston Ring (2 used)	47	736214	Exhaust Body Screws (3 used)
18	270612	Cylinder Block Assy. (c/w studs)	48	270136	Exhaust Manifold Cover
19	270009	Cylinder Head Stud (6 used)	49	850310	Flexloc Nut (2 used)
20	270059	Cylinder Base Nut (4 used)	50	270137	Exhaust Manifold Gasket
21	854114	Cylinder Base Washer (4 used)	51	270340	Bucking Spike (Western)
22	270058	Cylinder Base Gasket	52	270345	Bucking Spike (Eastern)
23	270070	Cylinder Head	53	741464	Bucking Spike Screws (2 used)
24	270038	Brace Stud	54	850364	Bucking Spike Nuts (2 used)
25	850264	Brace Nut 1/4-28 Keps	55	270024	Crankcase Studs (3 used)
26	270071	Head Gasket	56	854214	Washers (3 used)
27	270073	Cylinder Head Nut (Special, 2 used)	57	270059	Nuts (3 used)
28	850064	Cylinder Head Nut (4 used)	58	270710	Engine Gasket Set
29	275069	Cylinder Head Washer (6 used)	59	726610	Exhaust Cover Screws
30	10252	Spark Plug	60	850110	Exhaust Nuts (2 used)

NOTE: Refer to pages I-16 SECTION I, PART III — GEARBOX for Model 271 differences.

MODEL 270 AND 271 CARBURETOR AND AIR FILTER

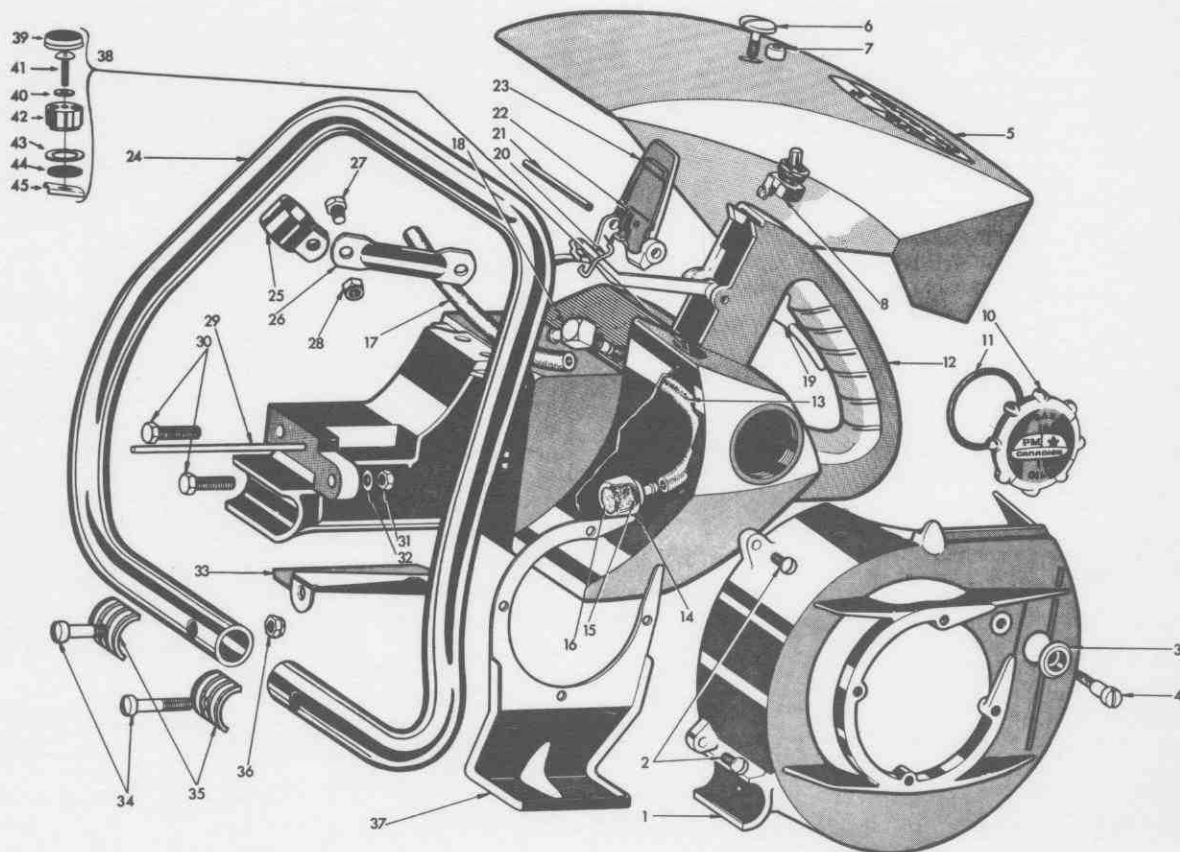


REF. NO.	PART NO.	DESCRIPTION	REF. NO.	PART NO.	DESCRIPTION
1	270095	Carburetor Complete	30	011401	Idle Adj. Screw Packing
2	270096	Carburetor Heat Damper Gasket	31	05095	*Idle Speed Regulating Screw
3	275098	Carburetor Gasket	32	270099	Idle Speed Regulating Screw Cup
4	270028	Insulating Sleeve (2 used)	33	0788	*Idle Speed Regulating Screw Spring
5	270026	Fibre Washer (2 used)	34	010513	*Inlet Control Lever
6	270027	Spacer Washer (2 used)	35	010581	*Inlet Control Lever Pinion Screw
7	270059	Jam Nut (2 used)	36	013565	*Inlet Needle, Seat & Gasket
8	012382	Body (Service)	37	010165	Inlet Seat Gasket
9	02531	*Body Channel Welch Plug	38	011503	*Inlet Tension Spring
10	012381	Choke Shaft & Lever	39	011494	*Main Adjustment Screw
11	012383	Choke Shaft Return Spring	40	08793	*Main Adj. Screw Spring
12	011883	Choke Shutter	41	011428	Main Adj. Screw Washer
13	02232	Diaphragm Chamber Drain Screw	42	011401	Main Adj. Screw Packing
14	012473	Diaphragm Gasket	43	012084	Nozzle Check Valve
15	012475	*Diaphragm	44	012378	Throttle Shaft & Lever
16	010526	Diaphragm Cover	45	09780	Throttle Shaft Bushing (2 used)
18	010880	Fuel Pump Gasket	46	09678	Throttle Shaft Clip
19	012698	*Fuel Pump Diaphragm	47	0992	Throttle Shaft Clip Lockwasher
20	010525	Fuel Pump Body	48	01974	Throttle Shaft Clip Ret. Screw
21	010098	Fuel Pump Body Screw & Lockwasher (6 used)	49	012244	*Throttle Shaft Return Spring
22	010530	*Fuel Strainer Screen	50	011226	Throttle Shutter
23	010529	Fuel Strainer Cover Gasket	51	012296	*Throttle Shutter Screw
24	010527	Fuel Strainer Cover	52	GS-155	*Gasket & Packing Set
25	010571	*Fuel Strainer Cover Ret. Screw	53	RK-473	Repair Parts Kit
26	011716	*Idle Adj. Screw	54	853910	Cover Nut
27	270099	Idle Adj. Screw Cup	55	271214	Air Filter Washer
28	08793	*Idle Adj. Screw Spring	56	270624	Air Filter Element (Standard)
29	011428	Idle Adj. Screw Washer	57	275623	Air Filter Adapter (c/w Stud)
			58	716460	Adapter Screw (2 used)
			59	010776	Spring Anchor Pin
			60	012910	Diaphragm and Gasket Set

(*) Indicates contents of Repair Parts Kit

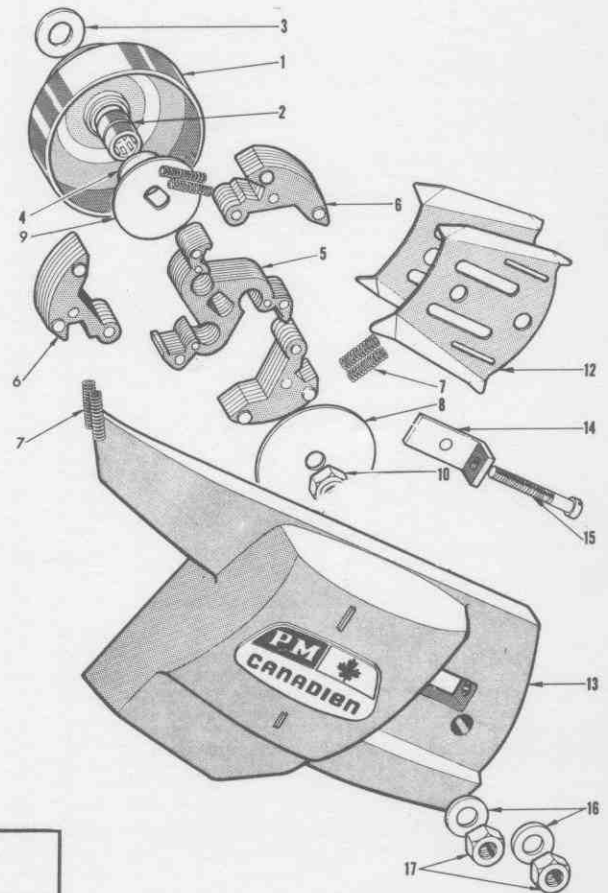
* FROM S/N 30690 & UP USE REPAIR PARTS KIT # ~~RK~~ # RK 734
 (**) FROM S/N 30690 & UP USE GASKET & PACKING SET # GS 158

MODEL 270 AND 271 FUEL SYSTEM



REF. NO.	PART NO.	DESCRIPTION	REF. NO.	PART NO.	DESCRIPTION
1	270077	Blower Housing	27	700814	Screw
2	786010	Blower Housing Screw (4 used)	28	850414	Nut
3	270084	E Z Pull Roller	29	270295	Oiler Pushrod
4	270085	Roller Screw	30	701664	Tank Screw (2 used)
5	270640	Outer Shroud Assembly (includes *)	31	850364	Tank Nut (4 used)
6	*270301	Screw	32	855914	Tank Washer (4 used)
7	*270312	Screw Retainer	33	270220	Snow Guard
8	270238	Switch	34	702414	Screw (2 used)
9	270082	No longer used	35	270326	No-Squash Washer
10	270202	Fuel Cap	36	850414	Nut
11	19137	Fuel Cap Gasket	37	270390	Step Plate
12	270632	Fuel Tank Assembly	38	275634	Tank Vent Kit (includes †)
13	270206	Fuel Pickup Hose	39	†275216	Cover
14	270633	Fuel Pickup Assembly (includes **)	40	†271214	Washer
15	**270208	Fuel Pickup Screen (2 used)	41	†772010	Screw
16	**19159	Felt (1 used 1/2" thick)	42	†275215	Body Assembly
17	270210	Fuel Line	43	†271219	Gasket
18	270209	Fuel Pickup Connector	44	†271218	Filter
19	270230	Throttle Trigger	45	†271213	Clamp
20	270232	Throttle Link		†275218	Filter
21	270231	Hinge Pin		†275007	Valve
22	270235	Choke Spring		†275217	Spring
23	270234	Choke Lever		†275223	Washer
24	270325	Front Handle	For Saws with Flush Cut Handle (not shown)		
25	270328	Clamp		270016	Flush Cut Handle
26	270329	Brace		270006	Bracket

MODEL 270 AND 275 (FLATTED DRIVE) CLUTCH



REF. NO.	PART NO.	DESCRIPTION
1	270645 270653	7 Tooth Sprocket (drum & bearing) 8 Tooth Sprocket (drum & bearing)
2	270348	Sprocket Bearing (2 used)
3	19029	Thrust Washer
4	276378 275672	Thrust Washer Clutch Assy. (includes *)
5	*276643	Clutch Driver
6	*275654	Clutch Shoe Assembly (3 used)
7	*270363	Spring (6 used)
8	*275364	Side Plate
9	276364	Side Plate
10	850467LC	Crankshaft Nut
12	21123	Guide Plate (2 used)
13	270648	Chain Cover Assy. (includes **)
14	**270649	Chain Tensioner Assembly
15	**737814S	Chain Tensioner Screw
16	276381	Bar Washer (2 used)
17	850066	Bar Nut (2 used)