

PARTS LIST

HOMELITE®

CHAIN SAW



PRICE .38



PART NO. 24655

HOMELITE DIVISION OF TEXTRON INC.
14401 Carowinds Boulevard
Charlotte, N.C. 28217

AMPS

HOMELITE **TEXTRON**
Homelite Division of Textron Inc

VI 123 Chain Saw

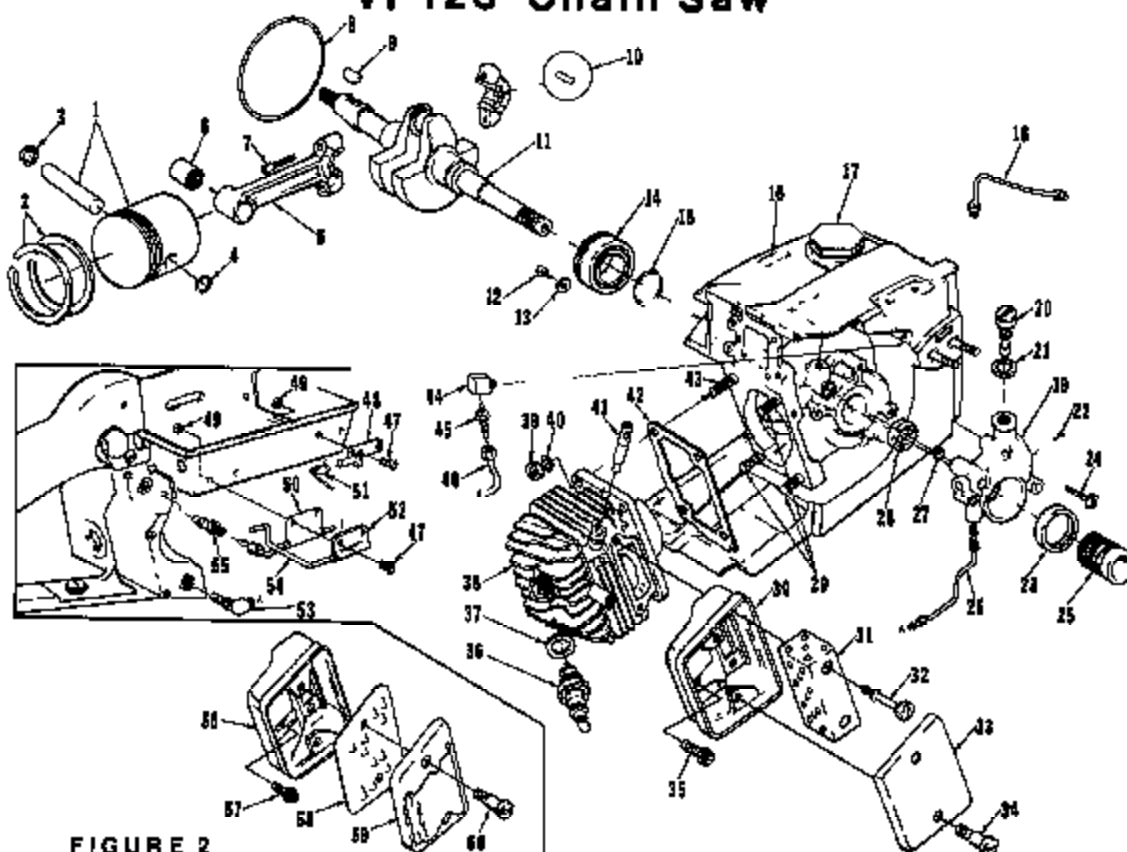


FIGURE 2

No.	Description	Part No.	Qty.	No.	Description	Part No.	Qty.
1	PISTON & PIN Includes:	A-66436	1	* MUFFLER (complete)	A-69232	1	
2	PISTON RING	59436	2	Includes:			
3	RING-retaining	75120	1	*30 BODY-muffler	A-69231-1	1	
4	RING-piston pin retaining	64813	1	*31 Baffle-muffler	69230-1	1	
5	ROD-connecting Includes:	A-68488	1	32 SCREW-shoulder	68481	2	
6	BEARING-needle	67406	1	*33 CAP-muffler	69226-1	1	
7	SCREW	80541	2	34 SCREW-shoulder	64133-A	2	
8	"C" RING	56766	1	35 SCREW-hex, 12-24 x 1/2	60821	1	
9	KEY-Woodruff	75078	1	36 SPARK PLUG	63547-B	1	
*10	ROLLER-needle (set of 25)	A-69050	1	37 Includes: GASKET	25036	1	
*11	CRANKSHAFT	68730	1	*38 CYLINDER	A-68796-1A	1	
12	SCREW-bearing retainer	59704	2	39 NUT-hex, 1/4-28	31065-2	4	
13	WASHER-special	63905	2	40 WASHER-lock, 1/4	63009	4	
14	BEARING-ball	63865-B	1	41 PIN-compression release	A-67482	1	
15	RING-retaining	58312-A	1	42 GASKET-cylinder	65820	1	
16	DECAL	64144	1	43 STUD-cylinder (long)	63898	1	
17	CAP-fuel filler	A-65263-B	1	44 CONNECTOR-elbow	61734	1	
18	LINE-oil (auto. upper)	A-63816	1	45 FITTING-straight	65696	1	
19	PUMP-automatic oil Includes:	A-67029	1	46 LINE-oil (manual)	A-67079	1	
20	SCREW-cam	64102-A	1	47 SCREW-pin, 6-32 x 3/8	80571	4	
21	GASKET	59796	1	48 PIVOT PIN & BRACKET	A-64658-2	1	
22	SCREW-pin, 4-40 x 1/4	80919	2	49 NUT-flaxlock, 6-32	81126	4	
23	SEAL-felt	64393	1	50 CLAMP-oil	65849-2	1	
24	SCREW-pin, 8-32 x 7/8	80568	3	51 SPRING-relief valve	64653	1	
25	WORM-oil pump	63226	1	52 CLAMP-lever	64655-2	1	
26	LINE-oil (auto. lower)	A-63947	1	53 FILTER-oil	A-64741	1	
27	"C" RING	58074	1	54 LEVER-relief valve	64654-B	1	
28	SEAL	58308-A	1	55 VALVE-check	A-65948	1	
29	STUD-cylinder (short)	56871	3	MUFFLER (complete)	A-69232	1	
				Includes:			
				56 BODY-muffler	† A-64130-2	1	
				57 SCREW-hex, 12-24 x 1/2	† 60821	2	
				58 Baffle-muffler	† 68472	1	
				59 CAP-muffler	† A-69231-1	1	
				60 SCREW-shoulder	† 64133-A	1	

* Denotes new parts

† Optional

ALWAYS FURNISH MODEL AND SERIAL NUMBER WHEN ORDERING PARTS

VI 123 Chain Saw

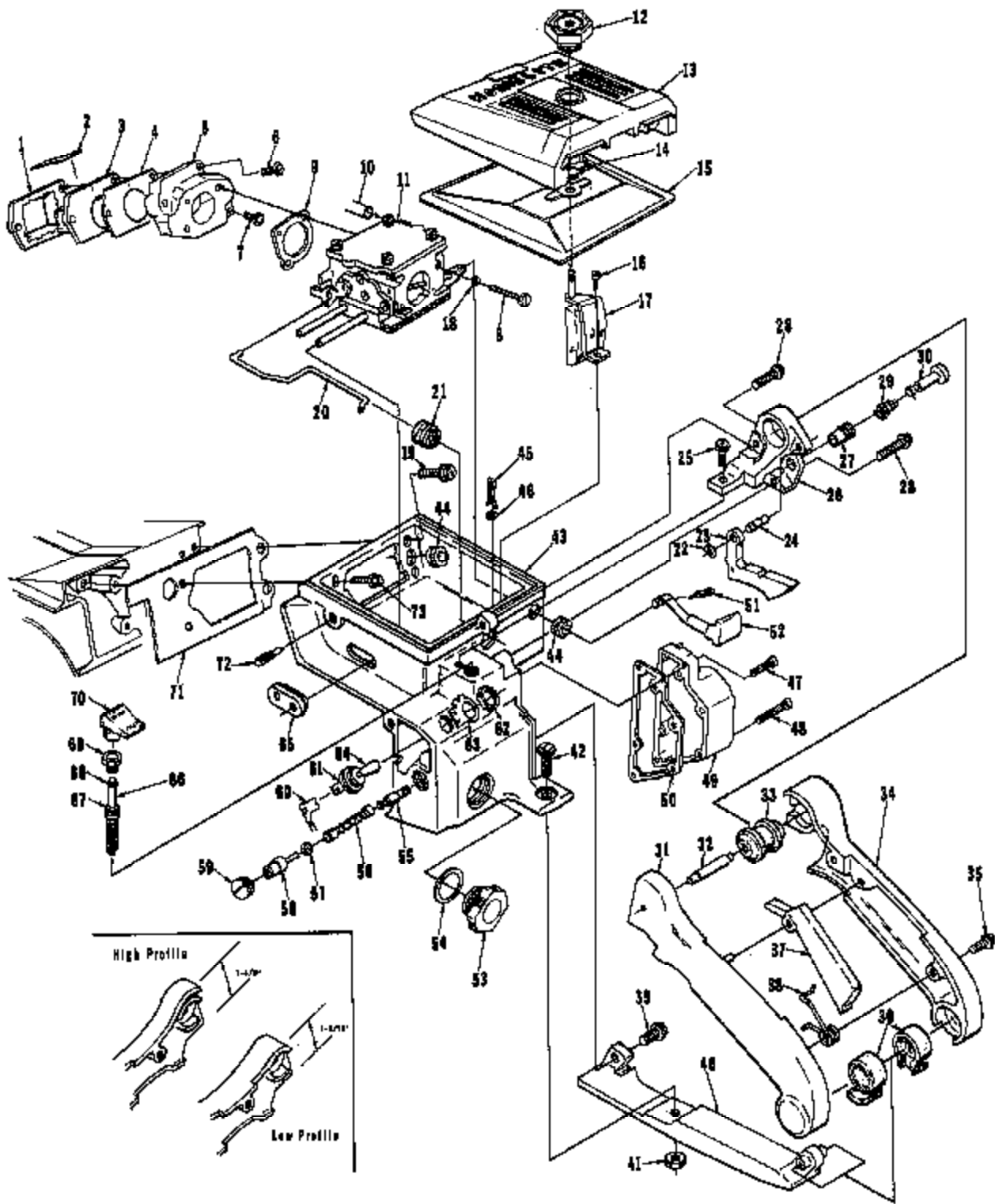


FIGURE 3

VI 123 Chain Saw

No.	Description	Part No.	Qty.	No.	Description	Part No.	Qty.
1	RETAINER-reed valve	64253-A	1	*38	SPRING-trigger	68681	1
2	REED-valve	68678-B	4	39	SCREW-hex, 12-24 x 1-1/4	80994	1
3	SEAT-reed valve	64252-A	1	*40	BASE-handle	A-69085-1	1
4	GASKET-reed valve seat	64266	1	*41	NUT-hex, 12-24	81225	1
5	MANIFOLD-intake	A-67692-A	1	42	SCREW-pan 12-24 x 5/8	80707	1
	Includes:			*43	CARBURETOR CHAMBER	A-68163	1
6	SCREW-pan, 8-32 x 1-1/4	82174	3		Includes:		
7	SCREW-pan, 8-32 x 1	82173	1	44	GROMMET	64862	2
8	SCREW-hex, 10-32 x 1-7/8	82179	2	45	PIN-cotter	86301	1
9	GASKET-carburetor	67681	1	46	WASHER-felt	83290	1
10	LINE-fuel	83544	1	47	SCREW-flt, 8-32 x 3/4	82150	3
11	CARBURETOR (SDC-21)	A-68402	1	48	SCREW-flt, 8-32 x 1-5/8	82153	3
12	NUT-cover mounting	A-67827	1	49	COVER-oil tank	A-68120	1
*13	COVER-air filter	63183-6	1		Includes:		
14	RING-retaining	68318-A	1		PLUG-pipe (not shown)	59871	1
15	FILTER ELEMENT-air	A-63956-A	1	50	GASKET-oil tank	87265	1
16	SCREW-hex, 12-24 x 1/2	80821	1	51	PIN-cotter	86324	1
17	BRACKET-air filter cover	A-68056	1	52	ROD-choke	67000-1	1
18	WASHER-lock, #10	83046	2	53	CAP-oil (vented)	A-65284-A	1
19	SCREW-hex, 12-24 x 7/8	80891	1		Includes:		
*20	ROD-throttle	68084	1	54	"O" RING	85133	1
21	BOOT-throttle rod	67634	1		VALVE-vent (not shown)	63716	1
*22	RING-retaining	69071	1	55	FILTER-oil (manual)	A-64288	1
*23	TRIGGER-throttle	63212-1	1	56	LINE-flexible oil	54358	1
*24	PIN-trigger	69069-1	1	57	GASKET	59736	1
25	SCREW-pan, 10-32 x 1/2	80825	1	58	FITTING-check valve	A-63839	1
*26	BRACKET-vibration mount	A-68160	1	59	SCREW-set	68113	1
27	Includes: BUSHING-nylon	64646	1	60	LEAD-ground	A-63839	1
28	SCREW-pan, 10-32 x 5/8	80572	2	61	SWITCH	A-63838	1
29	SPRING-throttle latch	64877	1	62	Includes: NUT	72084-A1	1
30	PIN-throttle latch	65592-A	1	63	PLATE-"on-off"	63910	1
*31	HANDLE-throttle (left, high profile)	A-69086	1	*64	SLEEVE-grounding switch	69092	1
*	HANDLE-throttle (left, low profile)	A-69086-1	1	65	GROMMET-"hi-lo"	58858	1
*32	PIN-vibration isolator	86899	1	66	PLUNGER-oil pump	A-69061-A	1
*33	ISOLATOR	86923	1	67	Includes: "O" RING	58406	1
*34	HANDLE-throttle (right, high profile)	68974-2	1	68	"O" RING	69074	1
*	HANDLE-throttle (right, low profile)	68222-2	1	69	NUT-plunger	65082	1
*35	SCREW-pan, 8-32 x 5/8	80582	2	70	BUTTON-oil pump	67386	1
*36	ISOLATOR	88325	2	71	GASKET-carburetor chamber	64287	1
*37	TRIGGER-throttle latch	68682	1	72	SCREW-idle adjustment	65622-A	1
	* Denotes new parts			73	SCREW-hex, 12-24 x 5/8	80878	1

FIGURE 3

VI 123 Chain Saw

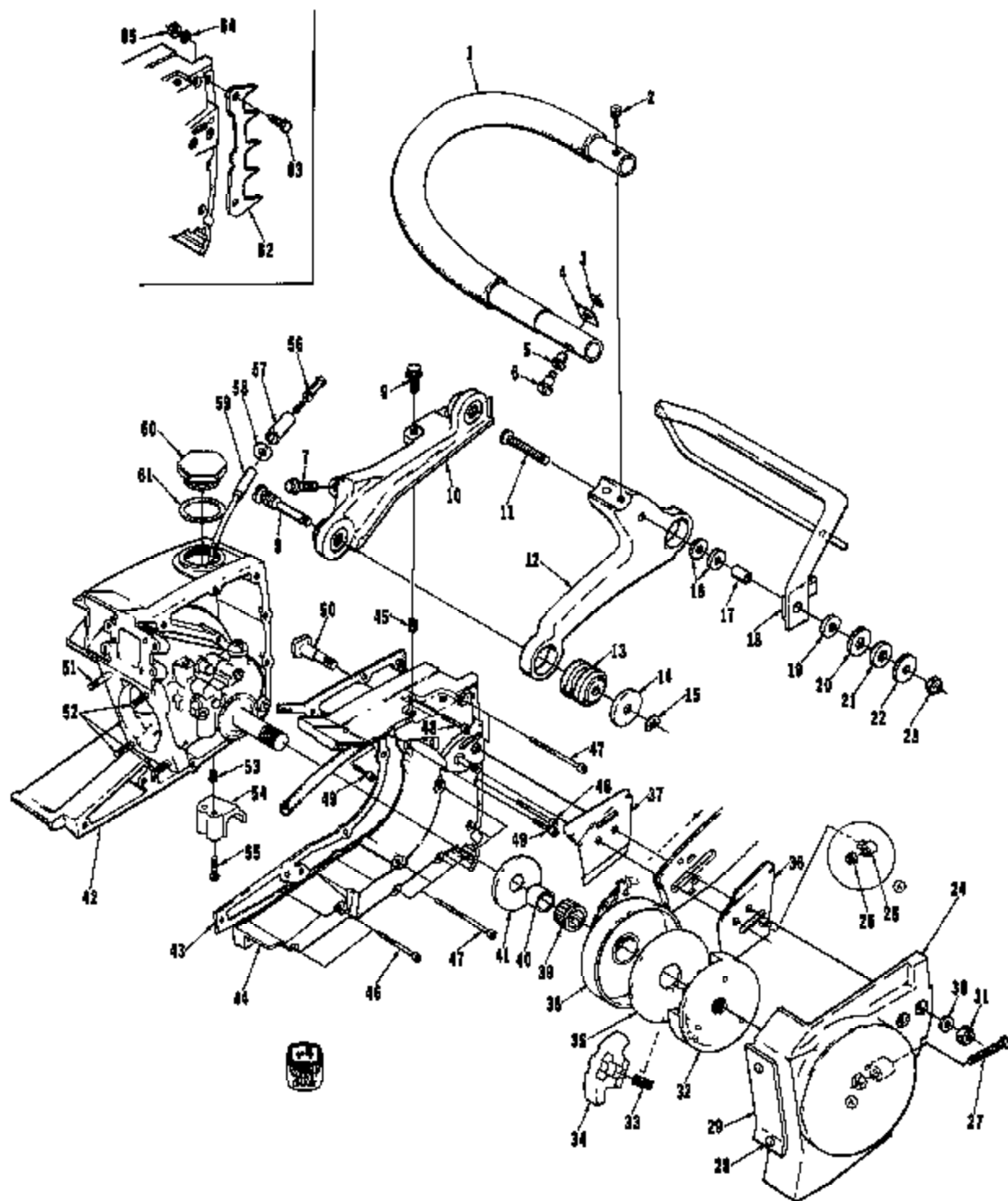


FIGURE 4

VI 123 Chain Saw

No.	Description	Part No.	Qty.	No.	Description	Part No.	Qty.
1	HANDLE BAR-flush cut	A-69033-1	1		WASHER-thrust	† 68833-1	1
2	SCREW-sou, 10-32 x 1	82126	1	39	BEARING-cage	64124	1
3	PLATE-handle bar	65670	1	40	RACE-inner	65685	1
4	PAD-handle bar	65334	1	41	WASHER-thrust	63860	1
5	GRIMMET-handle bar	65122	1	*42	CRANKCASE & TANK	A-69162	1
6	SCREW-shoulder	68338	1		Includes:		
7	SCREW-hex, 12-24 x 7/8	80891	1		PIN-dowel (not shown)	71430	2
* 8	SCREW-vibration mount	68987	2		PIN-dowel (not shown)	65365	2
9	SCREW-hex, 10-32 x 5/8	80704	2		SEAL-(see fig. 2 index #28)	68308-A	1
*10	BRACKET-vibration mount	68992-2	1	43	GASKET-fuel tank	68964-A	1
11	SCREW-flat, 12-24 x 1-1/2	62223	1	44	COVER-fuel tank	A-68049	1
*12	BRACKET-handle bar	A-69164	1		Includes:		
*13	ISOLATOR-vibration	68320	2		GASKET-check valve		
*14	WASHER	68998-1	2		(not shown)	68144	1
15	"E" RING	67857	2		CAP-check valve (not shown)	65143	1
16	WASHER-flat	64006-1	2	45	INSERT-taplock	72489	3
17	BUSHING	68334-1	1	46	SCREW-flt, 8-32 x 1-7/8	82154	3
18	GUARD-anti-kickback	A-68932-1	1	47	SCREW-flt, 8-32 x 2-3/16	82166	7
19	WASHER-flat	64099	1	48	SCREW-flt, 8-32 x 1-1/4	82162	1
20	WASHER-flat	68939-1	1	49	SCREW-flt, 8-32 x 15/16	82151	2
21	WASHER	65935	1	50	BOLT-guide bar	67183	2
22	WASHER-flat	68940-1	1	51	STUD-cylinder (long)	63868	1
23	NUT- 12-24	61222	1	52	STUD-cylinder (short)	65671	3
*24	COVER-chain	A-69090	1	53	INSERT-taplock	72482	2
	Includes:			54	STOP-handle bar	67506-2	1
25	PIN-bar adjusting	65768-1	1	55	SCREW-part, 10-32 x 5/8	80572	2
26	NUT-lock, 10-32	61211	1	56	FILTER-fuel	A-63920	1
27	SCREW-guide bar adjusting	65175-A	1	57	Includes: FILTER-felt	64082-1	1
28	RIVET-oval head	85061	2	58	WASHER	64182	1
29	SHIELD-sawdust	64618	1	59	LINE-fuel	63544	1
30	WASHER-flat, 5/16	84032	2	60	CAP-fuel filler	A-66283-B	1
31	NUT-hex, 5/16-18	81198	2		Includes:		
	CLUTCH	A-64910	1	61	GASKET	68961	1
	Includes:				VALVE-check (not shown)	63718	1
32	PLATE-clutch	64304-1	1	62	BUMPER-spiked	† A-64722	1
33	SPRING-clutch	66842	3		Includes:		
34	SHOE-clutch	64569-3	3	63	SCREW-hex, 12-24 x 5/8	† 80676	2
35	COVER-clutch	63671	1	64	WASHER-lock, #12	† 83058	2
36	PLATE-guide bar (outer)	67299	1	65	NUT-hex, 12-24	† 81088	2
37	PLATE-guide bar (inner)	67300	1				
*38	SPROCKET & DRUM						
	. 325 pitch, 8 tooth	A-68898	1				
	SPROCKET & DRUM (see note)	† A-64908	1				
	HUB & DRUM-splined	† A-65988	1				
	SPROCKET-splined						
	3/8 pitch, 7 tooth	† OM-68218	1				

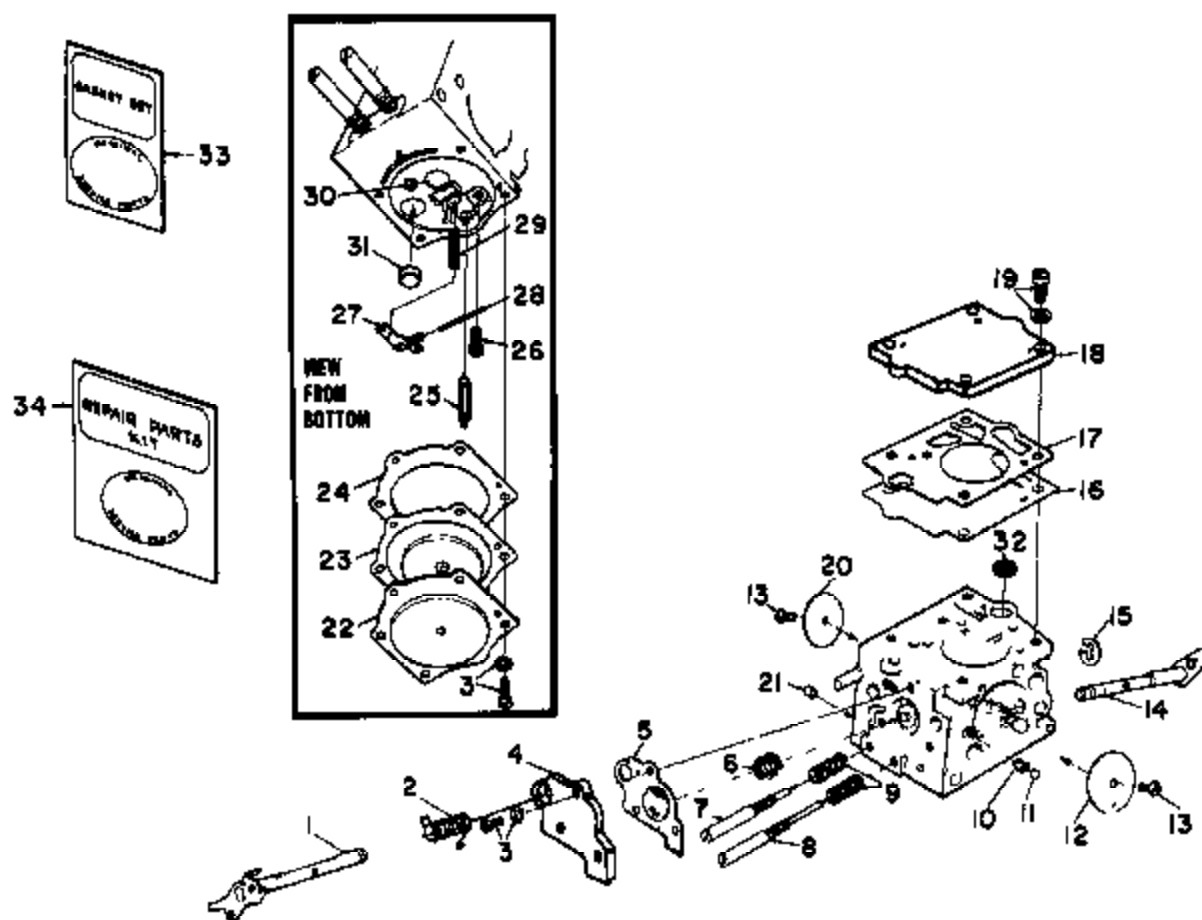
* Denotes new parts

† Optional

NOTE: Sprocket & Drum A-64908 requires the use of one (1) 63860 Thrust Washer, one (1) 83090 Inner Race and one (1) 64333 Needle Bearing for proper assembly.

FIGURE 4

VI 123 Chain Saw



A-68402 (SDC-31)

No.	Description	Part No.	Qty.	No.	Description	Part No.	Qty.
1	SHAFT-throttle	64226	1	19	SCREW-fuel pump cover	64894	4
2	SPRING-throttle return	† 67006	1	20	VALVE-throttle	67700	1
3	SCREW ASSEMBLY	64889	7	21	PLUG-limiting	64892	2
4	COVER-accelerator pump	67187	1	22	COVER-metering diaphragm	64224	1
5	DIA PHRAGM-accelerator pump	† 67188	1	23	METERING DIA PHRAGM ASSEMBLY	† 64235	1
6	SPRING-accelerator pump	† 64240	1	24	GASKET-metering diaphragm	† 64231	1
7	NEEDLE-idle	† 64241	1	25	VALVE-idle needle	† 64229	1
8	NEEDLE-high speed	† 64242	1	26	SCREW-metering lever pin	† 64888	1
9	SPRING-needle adjusting	† 64238	2	27	LEVER-metering	† 64246	1
10	SPRING-choke friction	† 64236	1	28	PIN-metering lever	† 64244	1
11	BALL-choke friction	† 60051	1	29	SPRING-metering lever	† 64237	1
12	VALVE-choke	64228	1	30	PLUG-Walch (main) 5/16	† 65482	1
13	SCREW-valve	† 64883	2	31	PLUG-Walch (idle) 3/8	† 30818	1
14	SHAFT-choke	67109	1	32	SCREEN-fuel inlet	† 64243	1
15	RING-throttle shaft retaining	64231	1	33	GASKET SET	† 67019	1
16	DIA PHRAGM-fuel pump	† 64238	1	34	REPAIR KIT	87197	1
17	GASKET-fuel pump	† 67008	1		REPAIR KIT-check valve	65388	1
18	COVER-fuel pump	67002	1				

† Contained in repair kits

‡ Contained in gasket sets

VI 123 Chain Saw

Tools

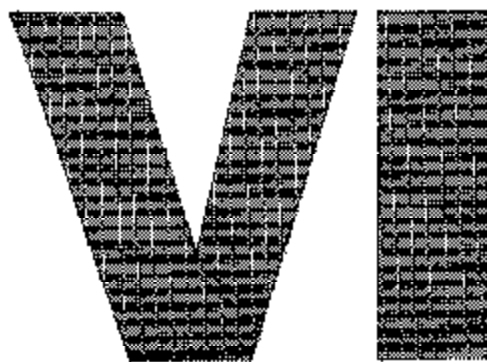
23846-2	ANVIL-roller bearing disassembly
24304	BIT-pezidriv #2
22820-5	COLLAR-bearing installation (bearing to shaft)
24173	DRIVER-check valve installation
24230	DRIVER-hand, pozidriv
A-24051	JACKSCREW- (bearing to shaft to crankcase)
24006-2	PLATE-shaft alignment
22828	PLIERS-retaining ring
A-24057	PLUG-bearing remover (back plate)
24055	PLUG-bearing & seal assembly (back plate)
A-23949	PLUG-piston pin removal
67800	Includes: "O" Ring
24054	PLUG-seal installation (crankcase)
23758	PLUG-needle bearing (connecting rod)
A-23960	PULLER-rotor removal
A-24138	REAMER-compression release
23987	SHIM-plastic (magneto air gap)
24076	SLEEVE-seal protecting (crankcase side)
23972	SLEEVE-seal installation
23136-1	SLEEVE-bearing & shaft installation
23759	SLEEVE-seal protection (back plate)
A-23934	SPANNER-clutch
23954	Includes: PIN-clutch spanner
A-23937-B	WRENCH-combination
23528	WRENCH-socket screw (connecting rod)

Accessories

68470-1	CAP-muffler (diffuser type, without shield)
65543-1	HEAT EXCHANGER
A-24460	KIT-guide bar plate
A-24273	KIT-ignition
A-24267-B	KIT-starter rope
68282	REEL-250' starter rope
A-64816	SPARK ARRESTER (reed muffler)

Paint

22772	SPRAY CAN-black
23475	SPRAY CAN-red



FORT CHESTER, NEW YORK, U.S.A. 10573