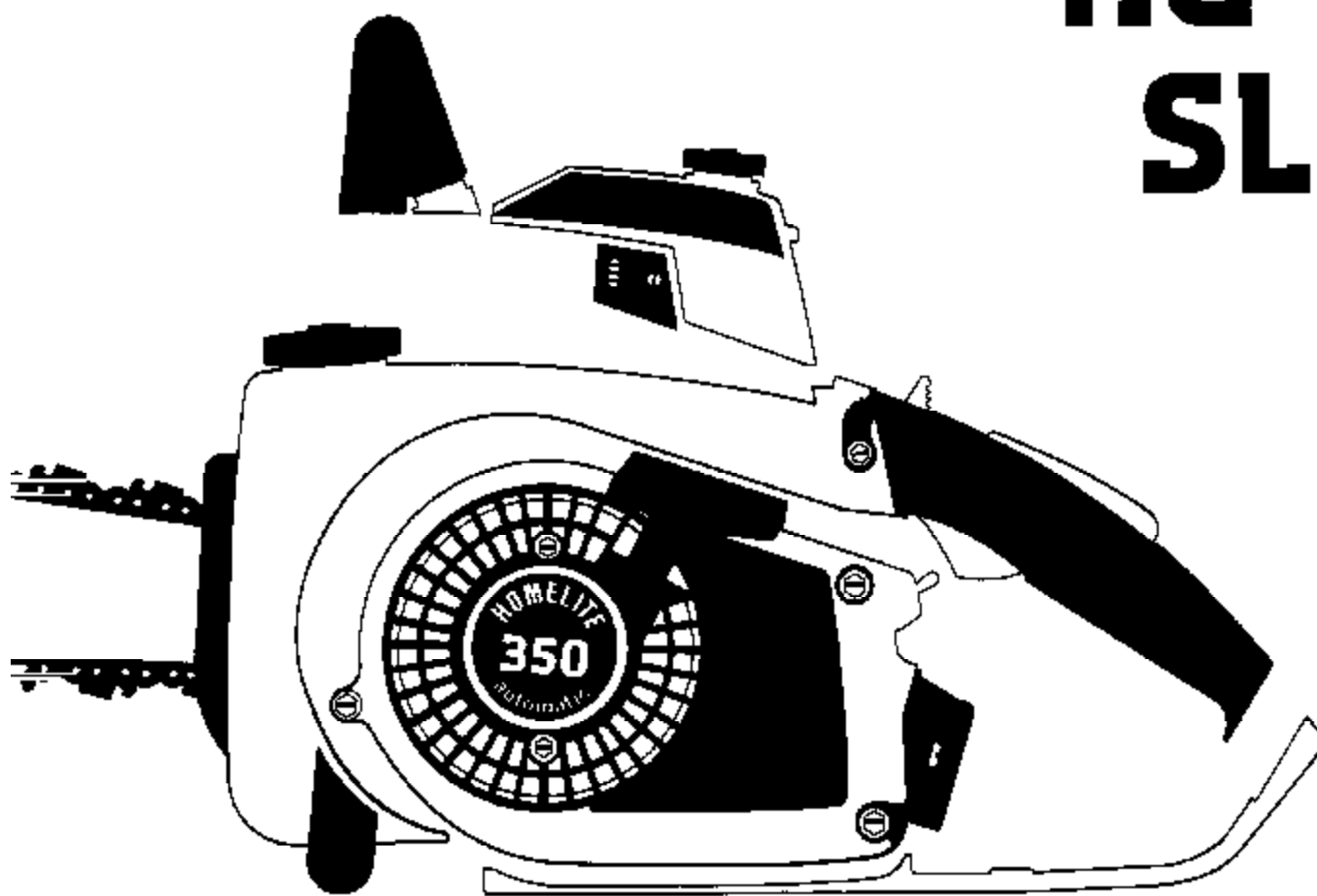


parts list

350 automatic chain saws HG SL



printed in U.S.A.



part no. 24820 rev. 1

350 · 350HG · 350SL automatic saws

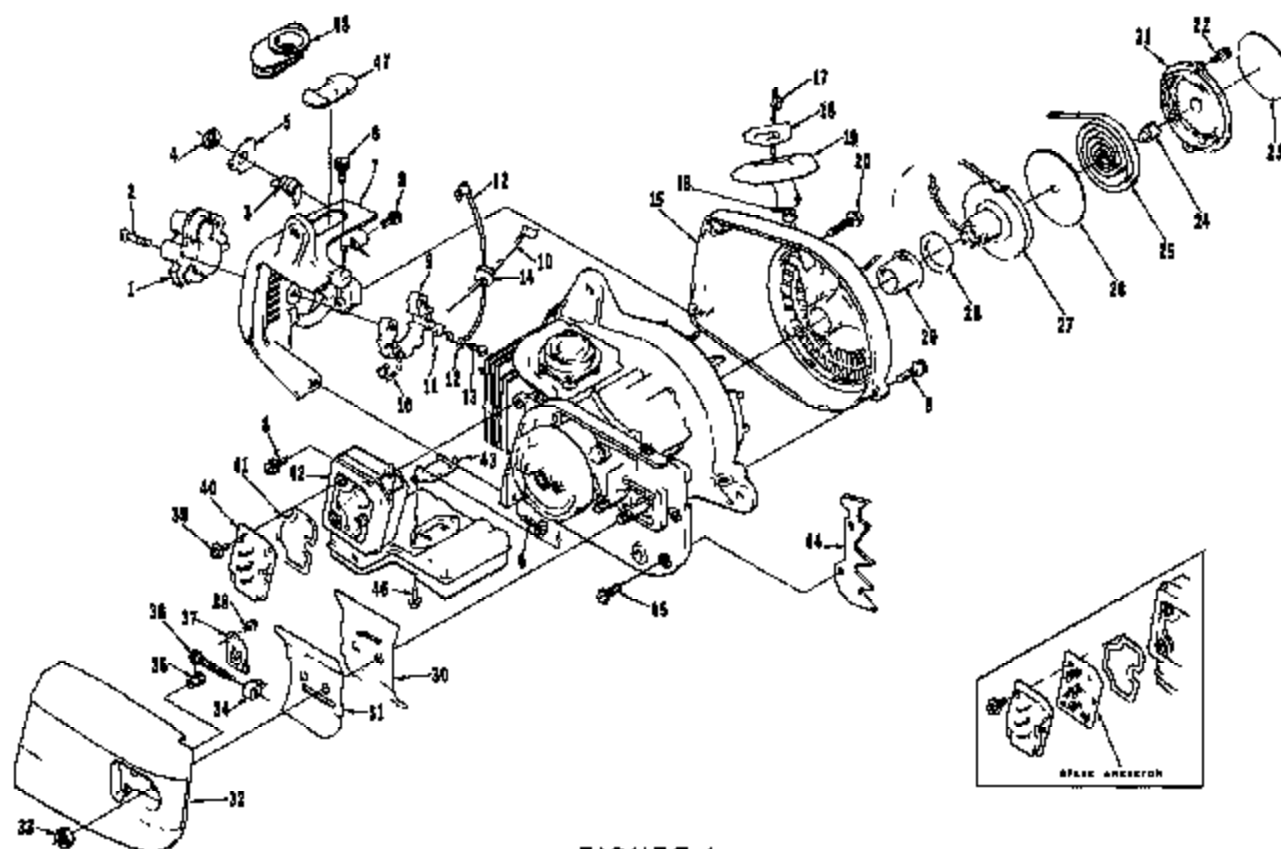


FIGURE 1

No.	Description	Part No.	Qty.	No.	Description	Part No.	Qty.
1	TRANSFORMER	A-12233	1	25	SPRING - rewind	65107	1
2	Includes: SCREW - Plastic	12731-A	2	26	SHIELD - spring	12062	1
	GROMMET - not shown	12191	1	27	PULLEY & CUP	A-12214	1
3	SWITCH - grounding	A-57850-3	1	28	SHIELD - pulley	12089	1
4	Includes: NUT	72084-A	1	29	BUSHING - starter cup	12053	1
* 5	"ON-OFF" PLATE	12793-A	1	30	PLATE - guide bar (inner)	12102	1
6	SCREW - hex hd. w/washer 10-24 x 3/4	88023	4	31	PLATE - guide bar (outer)	12169	1
7	SHIELD - cylinder	12074-2	1	32	COVER - drivecase	A-12235-1	1
8	SCREW - hex hd. w/washer 10-24 x 1/2	88024	2	33	NUT - hex 5/16-18	81196	2
9	RECEPTACLE - transformer	12029	1	34	PIN - guide bar adjusting	12133-1	1
10	LEAD - low tension	A-12719	1	35	ADJUSTER - guide bar	A-12137	1
11	CONTACT - transformer	12788	2	36	SCREW - guide bar adjusting	A-12132	1
12	LEAD - ground	A-12718	1	37	COVER - gear	12164	1
13	SCREW - Plastic pan hd. 6 x 3/8	82316	3	38	SCREW - pan washer hd. 6-32 x 3/8	82251	2
14	GROMMET	88279	1	39	SCREW - 8-32 x 3/8	88026	8
15	HOUSING - rewind starter	A-12114-1	1	40	PLATE - exhaust	12176-1	1
16	Includes: BUSHING - rope	66186	1	41	GASKET - exhaust plate	12178	1
* 17	ROPE - starter (40' #4)	12872	1	42	MUFFLER	A-12266	1
18	INSERT - rope retaining	68837	1	* 43	Includes: GASKET - muffler	12080-A	1
19	GRIP - starting rope	64155-A	1	* 44	BUMPER - spiked (accessory)	A-12272-A	1
20	SCREW - hex hd. w/washer 10-24 x 1-1/4	88023	1	45	Includes: SCREW - hex hd. 10-24 x 3/8	88041	2
21	COVER - starter	12623	1	46	SCREW - hex hd w/washer 10-24 x 5/8	88020	2
22	SCREW - hex hd. w/washer 8-32 x 1/2	88027	2	47	PLUG - cylinder shield	12288	1
23	DECAL - starter cover	12102	1	48	HEAT EXCHANGER (see note)	12253	1
24	LOCK - spring	65102	1		SPARK ARRESTOR (accessory)	12270	1

Note: When using Heat Exchanger, index #48, the Cylinder Shield Plug, index #47, and the Air Inlet Screen index #61 shown on Fig. 2, must be removed.

* Denotes new parts

350 · 350HG · 350SL automatic saws

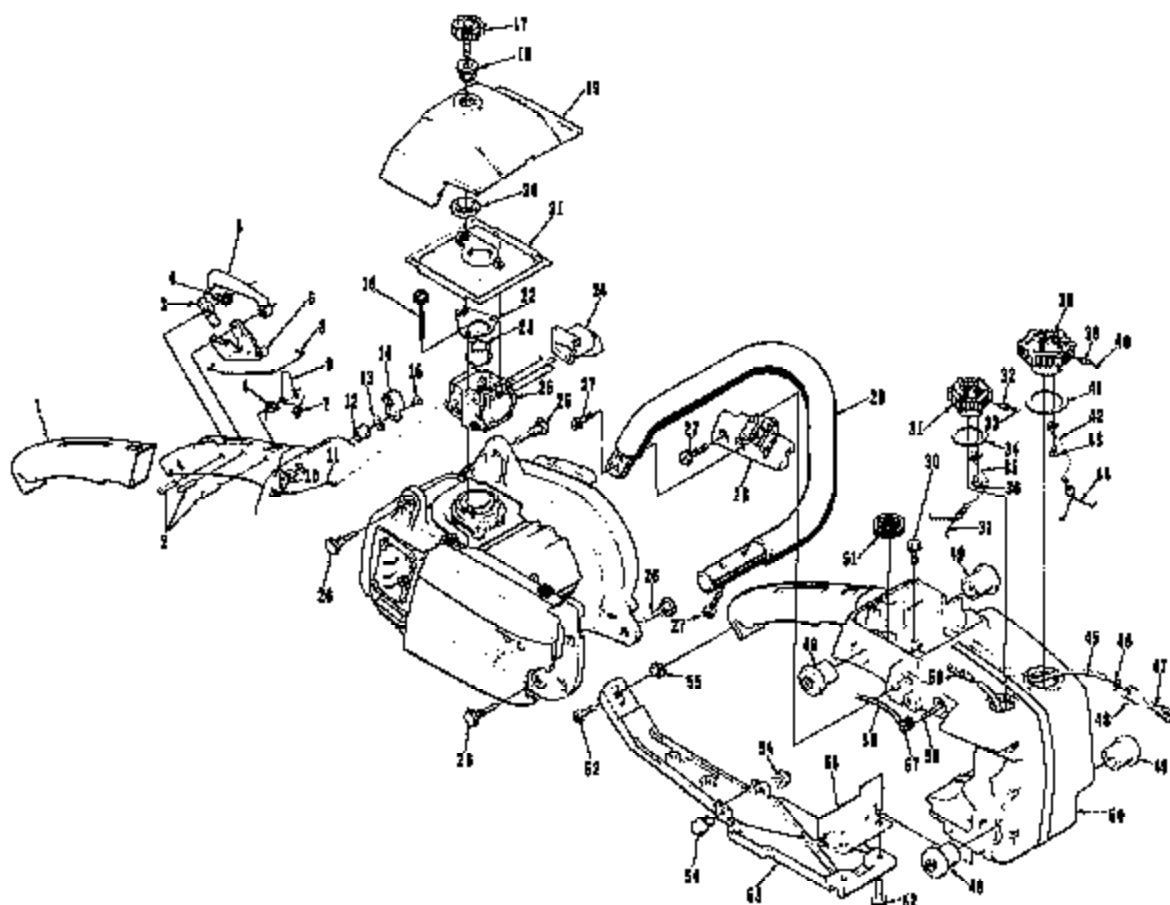


FIGURE 2

No.	Description	Part No.	Qty.	No.	Description	Part No.	Qty.
1	GRIP - throttle handle	12040	1	31	CAP - oil filler	A-12223	1
2	PIN - dowel	71476	3		Includes:		
3	LEVER - trigger lock	12092	1	32	VALVE - check (oval duckbill)	69451	1
4	SPRING - torsion	12031	2	33	FILTER - filler cap	69454	1
5	LOCK - trigger	12083	1	34	GASKET - oil cap	12126	1
* 6	KIT - trigger and screw	A-12006	1	35	CHAIN - head	69502	1
* 7	Includes: SCREW - trigger latch	12094-1A	1	36	SCREW - pan hd Plastic 6 x 1/4	82256	1
8	ROD - throttle	12018-1	1	37	RETAINER	69503	1
* 9	LATCH - trigger	12081-1A	1	38	CAP - fuel filler	A-69500	1
10	SHAFT - choke	A-12227	1		Includes:		
* 11	ROD - choke	12148-A	1	39	VALVE - check (oval duckbill)	69451	1
12	BUSHING	12147	1	40	FILTER - filler cap	69454	1
13	WASHER - wave	12150	1	41	GASKET - fuel cap	69501	1
14	KNOB - choke	12146	1	42	CHAIN - head	69502	1
15	SCREW - 8-32 x 3/8	88020	1	43	SCREW - pan hd Plastic 6 x 1/4	82256	1
16	SCREW - hex hd w/washer 10-24 x 1 3/4	88023	2	44	RETAINER	69503	2
17	NUT - filter cover mounting	A-12112	1	* 45	LINE - fuel	12973	1
18	BUSHING - nylon	12110	1	46	WASHER	64192	1
19	COVER - air filter	12033-3	1	47	PICK - UP - fuel	A-68920	1
20	NUT - push-on spring	12140	1	48	Includes: FILTER - felt	64083-1	1
21	FILTER ELEMENT - air	A-12225	1	49	ISOLATOR - vibration	12285	4
22	PLATE - spring	12117-1	1	50	HOUSING - engine	A-12288	1
23	BUSHING - flange	12108-1	1	51	Includes: SCREEN - air inlet (see note)	12240	1
24	GROMMET - "O" - LOW	12064	1	52	SCREW - hex hd w/washer 10-24 x 3/4	88022	3
* 25	CARBURETOR - HCC21 (350)	A-12477	1	53	BRACE - handle	12042-2	1
	CARBURETOR - HCC10 (350 HG, 350 SL)A-12160		1	54	BUMPER	12090	2
26	PIN - isolator	12100	4	55	NUT - hex 10-24	83208	1
27	SCREW - hex hd w/washer 10-24 x 3/4	88022	6	56	DEFLECTOR - air (exhaust)	A-12153	1
28	BRACKET - handle bar	12059-2	1	57	FITTING - oil line	12135	1
29	HANDLE BAR	A-12107	1	* 58	LINE - oil	12185-A	2
30	SCREW - hex hd w/washer 10-24 x 5/16	88020	2	59	FINISHER - oil	A-65172	1

* Denotes new parts

Note: Remove Screen, Index #51 when using Heat Exchanger.

ALWAYS FURNISH MODEL AND SERIAL NUMBER WHEN ORDERING PARTS.

350 · 350HG · 350SL automatic saws

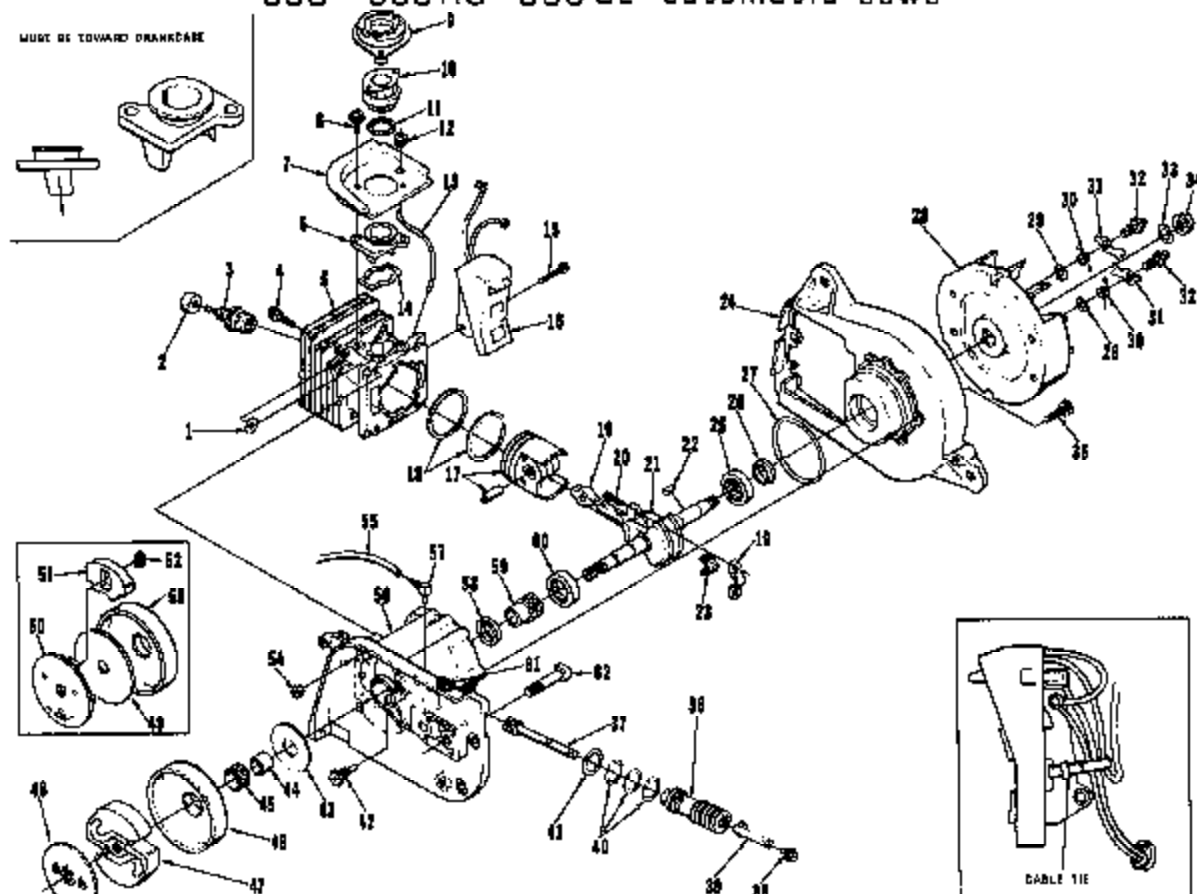


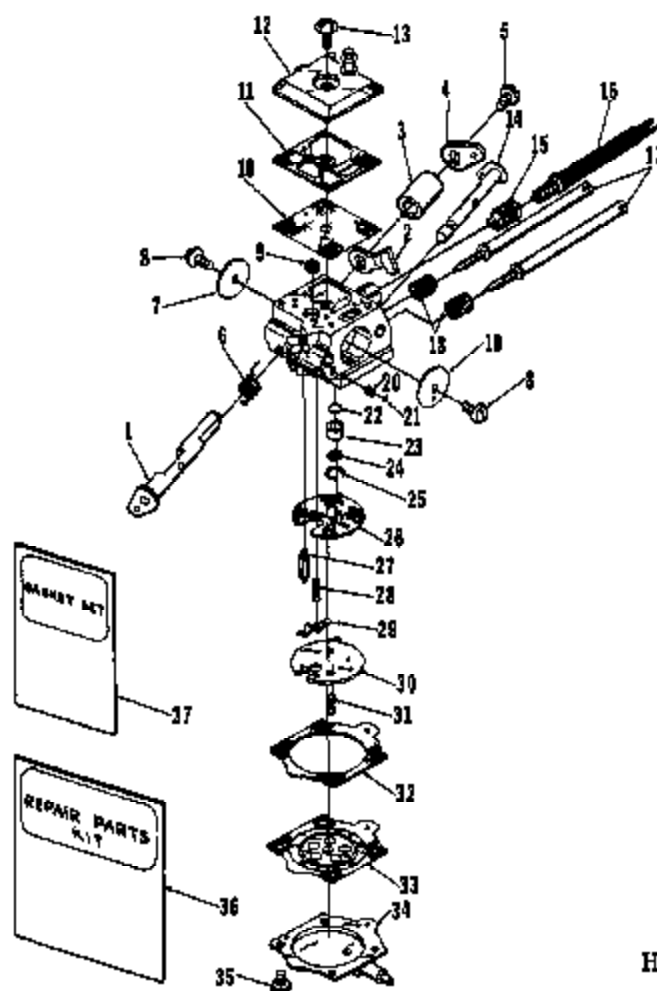
FIGURE 3

No.	Description	Part No.	Qty.	No.	Description	Part No.	Qty.
1	WASHER	12021	4	33	WASHER - 3/8	84088	1
2	GROMMET - spark plug	12191	1	34	NUT - 3/8 - 24	81239	1
3	SPARK PLUG	65130-8	1	35	SCREW - hex hd w/washer 10-24 x 3/4	88022	5
4	SCREW - sec. hd. cap 10-24 x 7/8	82262	4	36	PUMP - automatic oiler	A-12201	1
5	CYLINDER	A-12248	1		Includes:		
	Includes: FITTING - not shown	68633	1	37	PLUNGER - oil pump	A-12202	1
6	MANIFOLD - intake	12046	1	38	SCREW - hex hd w/washer 8-32 x 3/8	88028	1
* 7	DEFLECTOR - air (intake)	12161-1A	1	39	LEVER - oil adjustment	12141	1
8	SCREW - hex hd w/washer 10-24 x 1/2	88024	2	40	"O" RING	12095	3
9	FLANGE - carburetor connector	12062-1	1	41	"O" RING	12155	1
* 10	CONNECTOR - carburetor	12048-A	1	42	PIN & PLUG	A-12144	1
11	SPRING - gasfer	12281	1	43	WASHER - thrust	89860	1
12	GROMMET	82740	1	44	RACE - inner	68985-A	1
* 13	LINE - pulse	12254-A	1	45	BEARING - needle	64124	1
14	GASKET - intake adapter	13047	1	46	SPROCKET & DRUM - 3/8", 7T (see note)	A-12284-1	1
15	SCREW - hex hd w/washer 6-32 x 1-1/4	82194	2	* 47	CLUTCH - "B"	(see note) 68062-4	1
16	MODULE & CORE	12869	1	48	PLATE - clutch	(see note) 12154	1
17	PISTON & PIN	A-12257-A	1	49	COVER - clutch	(see note) 83871	1
	Includes: PISTON RING	12040	2		CLUTCH ASSEMBLY	(see note) A-69459	1
19	ROD - connecting	A-12068-1	1		Includes: PLATE - clutch	(see note) 68760-2	1
20	Includes: SCREW - sec. hd. 8-32 x 9/16	80805	2	51	SHOE - clutch	(see note) 69456	3
21	CRANKSHAFT	12037-1	1	52	SPRING - clutch	(see note) 83877	3
22	KEY - woodruff	75078	1	53	SPROCKET & DRUM - 3/8", 7T (see note)	A-69455	1
* 23	ROLLERS - needle (set of 25)	A-12913	1	54	NUT - counterlock #10-24	91208	4
24	PLATE - back	A-12204	1	* 55	LINE - oil	12155-A	1
25	Includes: BEARING - roller	83887	1	56	CRANKCASE	A-12251	1
* 26	SEAL	12282-A	1		Includes: FITTING - oil line	60558	1
27	"O" RING	68785	1	* 58	SEAL	12282-A	1
28	ROTOR	12191	1	59	WORM - gear	12071	1
29	WASHER - lock #10	89046	2	60	BEARING - roller	83887	1
30	SPRING - starter pawl	12055	2	* 61	BUMPER	12282	1
31	PAWL - starter	12058	2	62	BOLT - guide bar	68753	2
32	STUD - starter pawl	65198	2		CABLE TIE - module leads	12288	1

* Denotes new parts

Note: Units with Shoe Clutch use index numbers 49 thru 59 and units with "B" Clutch Use Index Numbers 48, 47, and 49.

350 · 350HG · 350SL automatic saws



*A-12977
HDC 21 (350)

A-12160
HDC 16 (350 HG, 350SL)

No.	Description	Part No.	Qty.	No.	Description	Part No.	Qty.
*	KIT - throttle shaft	A-12981	1	* 26	GASKET - circuit	† 67367-A	1
	Includes:			27	NEEDLE - inlet	† 64228	1
* 1	SHAFT - throttle	12945	1	28	SPRING - metering lever	† 12248	1
* 2	STOP - throttle	12943	1	29	LEVER - metering	† 67382	1
* 3	SPACER - throttle	12944	1	30	PLATE - circuit (HDC-16)	12277	1
* 4	LEVER - throttle	12942	1	*	PLATE - circuit (HDC-21)	12976	1
5	SCREW - valve	67372	1	31	SCREW - circuit plate	67378	2
6	SPRING - throttle return	† 67378	1	32	GASKET - metering diaphragm	† 64231	1
7	VALVE - throttle	12389	1	33	DIAHRAGM - metering	† 67371	1
8	SCREW - valve	† 67372	2	34	COVER - metering diaphragm	12250	1
9	SCREEN - fuel inlet	† 64243	1	35	SCREW - metering cover	64888	4
10	DIAHRAGM - fuel pump	† 67379	1	* 36	REPAIR KIT	12279-A	1
11	GASKET - fuel pump	† 67368	1	* 37	GASKET SET	† 67368-A	1
12	COVER - fuel pump	12198	1	*	KIT - high altitude (accessory)	A-12958	1
13	SCREW - pump cover	67374	1		Includes: PLATE - circuit	67382	1
14	SHAFT - choke	68632	1	*	GASKET - circuit	67367-A	1
15	SPRING - idle adjustment	12199	1	*	LABEL	12958	1
16	SCREW - idle adjustment	12197	1				
17	NEEDLE - idle adjustment	† 12196	2				
18	SPRING - needle adjustment	† 67377	2				
19	VALVE - choke	67365	1				
20	SPRING - choke friction	† 64238	1				
21	BALL - choke friction	† 60051	1				
	REPAIR KIT - check valve (accessory)	65385	1				
22	Includes: VALVE - check		1				
23	SEAT - valve		1				
24	SCREEN - check valve	67381	1				
25	RING - screen retaining	67380	1				

† Indicates contents of Repair Kit 12279-A

† Indicates contents of Gasket Set

* Denotes new parts

ALWAYS FURNISH MODEL AND SERIAL NUMBER WHEN ORDERING PARTS

350HG automatic saws only

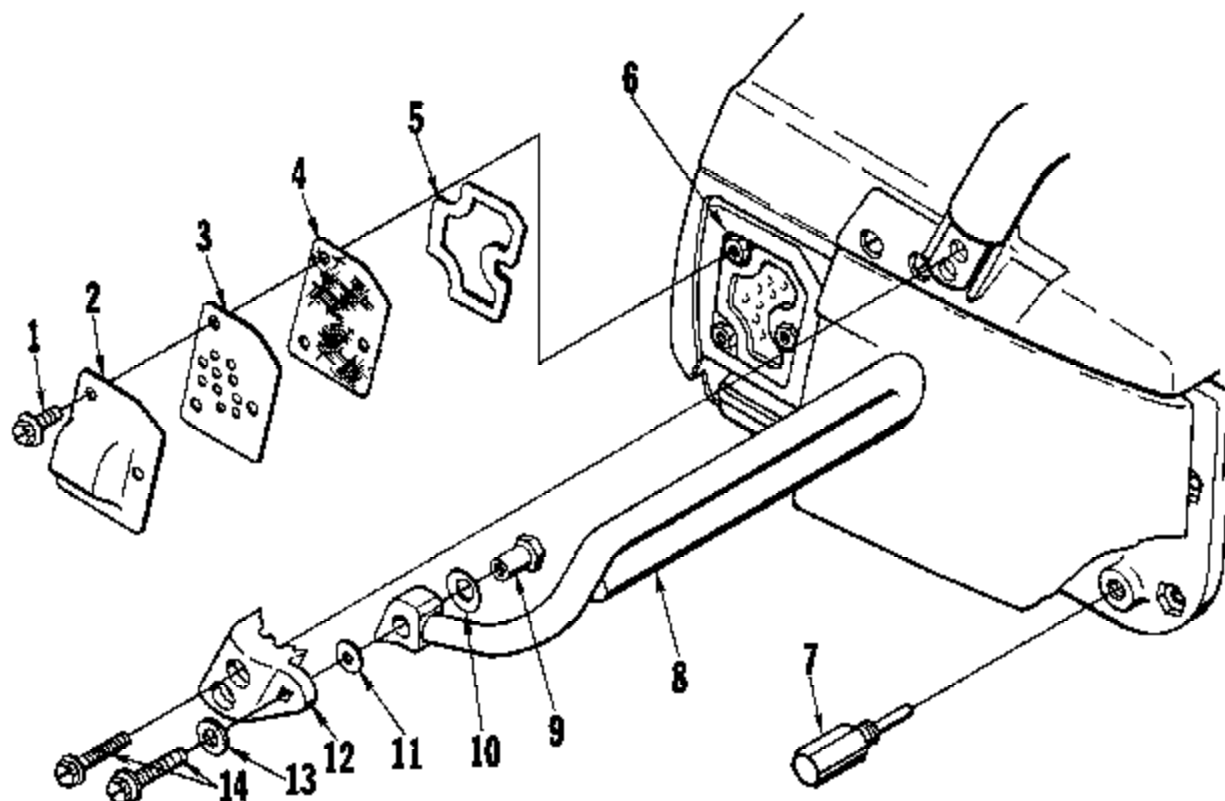


FIGURE 4

No.	Description	Part No.	Qty.	No.	Description	Part No.	Qty.
1	SCREW-8-32 x 1/8	88026	3	8	KIT-hand guard	A-12258	1
2	PLATE-muffler exhaust	12105-1	1	Includes	GUARD - hand	A-12213-1	1
3	BAFFLE	12118	1	9	SPACER-nut	12210	1
4	ARRESTOR-spark (accessory)	12270	1	10	WASHER-cupped spring	12219	1
5	GASKET-exhaust plate	12173	1	11	WASHER	38873-2	1
6	MUFFLER	A-12205	1	12	BRACKET-hand guard	12218-1	1
	Includes:			13	WASHER	12200	1
	GASKET-muffler (shown on Fig. 1)	12080	1	14	SCREW-hex hd./w/washer	10-21 x 1-1/4 88023	3
7	PIN-isolator (crankcase to fuel tank)	12468	1				

FOR ALL UNITS

ACCESSORIES

ARRESTOR-spark	12270
*BUMPER-spiked	A-12272-A
*FILTER ELEMENT-air	A-88824
KIT-Chain Brake	A-12237
KIT-Hand Guard	A-12258
*LINE-fuel and oil (10 feet)	12974
ROPE-starting #4, 250 ft. reel	68848

PAINT

SPRAY CAN-black	22772
SPRAY CAN-red	23475

* Denotes new parts

TOOLS

ANVIL-bearing removal (crankcase)	23846-1
ANVIL-bearing removal (crankcase & backplate)	23846-2
KEY-hex	22126
KEY-hex (HG-SL)	23528
PLUG-bearing & seal installation & removal	24827-A
PLUG-seal installation	24828-A
PULLER-rotor	A-24290
*SHIM-yellow plastic (.020)	21853
SLEEVE-seal assembly (crankcase & backplate)	23750
SLEEVE-seal removal (crankcase)	23136-6
TOOL & PLUNGER-piston pin	A-24871
WRENCH-combination	A-24824
WRENCH-spanner ('S' clutch)	A-23896-A
WRENCH-spanner (spider clutch)	A-23934

Refer to tool sheet #24873 for complete tool information.

350 SL automatic saws only

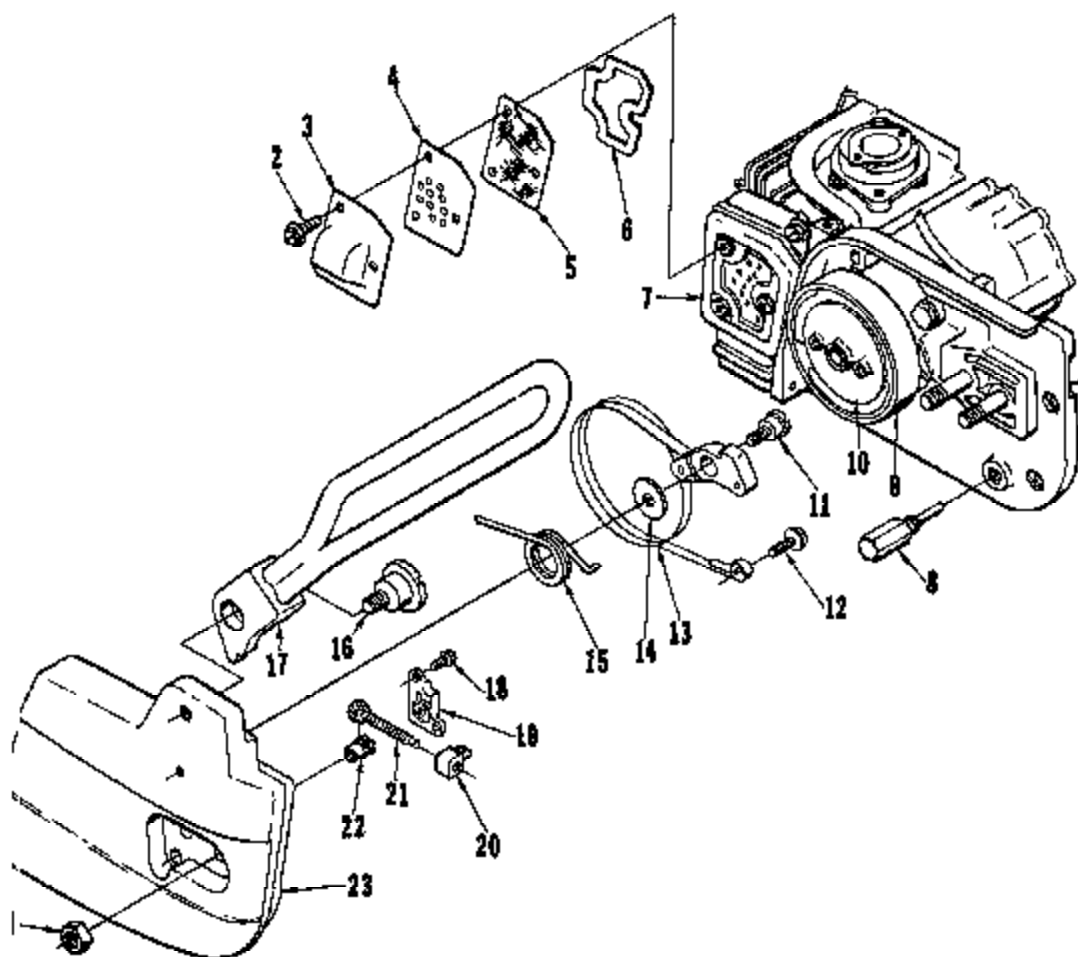


FIGURE 5

No.	Description	Part No.	Qty.
1	NUT-hex, 5/16-18	81196	2
2	SCREW-hex hd. w/washer, 8-32 x 3/8	88034	3
3	PLATE-muffler exhaust	12105-1	1
4	BAFFLE	12118	1
5	ARRESTOR-spark (accessory)	12290	1
6	GASKET-exhaust plate	12173	1
7	MUFFLER	A-12265	1
	Includes:		
	GASKET-muffler (shown on fig. 2)	12080	1
8	PIN-isolator (crankcase to fuel tank)	12268	1
	KIT-Chain Brake	A-12237	1
	Includes:		
9	SPROCKET & DRUM - 3/8", 7T	A-12204-1	1
*	CLUTCH - "B" (not shown)	68362-4	1
10	PLATE-clutch	12154	1
11	SCREW-shoulder	12371-1	1
12	SCREW-pan hd., 1/4-20 x 5/8	82258	1
13	BRAKE BAND & LEVER	A-12157	1
14	WASHER-spring retaining	12290	1
15	SPRING-torsion	68533	1
16	SCREW-shoulder (brake lever)	12379-1	2
17	LEVER-brake w/guard	A-12156	1
18	SCREW-pan washer hd., 6-32 x 3/8	82251	2
19	COVER-gear	12184	1
20	PIN-guide bar adjusting	12193-1	1
21	SCREW-guide bar adjusting	A-12182	1
22	ADJUSTER-guide bar	A-12137	1
23	COVER-drivecase	A-12297-1	1

* Denotes new parts

ALWAYS FURNISH MODEL AND SERIAL NUMBER WHEN ORDERING PARTS

Part No.	Description	Qty.	Part No.	Description	Qty.	Part No.	Description	Qty.	Part No.	Description	Qty.
12021	Washer	4	*12168-A	Lube-oil	2	12781-A	Screw-Plate	3	55955-A	Race-inner	1
12033-B	Cover-air filter	1	12173	Gasket-exhaust	1	12783-A	Co-Off Plate	1	57360	Ring-screen	2
12037-1	Crankshaft	1	12175-1	Plate-exhaust	1	*A-12913	Rollers-needle	1	57368	Valve-choke	1
12040	Piston Ring	2	12181	Grommet	1	*12942	Lever-throttle	1	*57367-A	Gasket-circuit	1
12042-B	Brace-handle	1	12192	Decal-starter	1	*12943	Stop-throttle	1	57368	Gasket-fuel	1
12046	Manifold-intake	1	12185-1	Plate-muffler	1	*12944	Spacer-throttle	1	*57369-A	Gasket-Set	1
12047	Gasket-intake	1	12195	Cover-fuel	1	*12945	Shaft-throttle	1	57370	Diaphragm-fuel	1
*12044-1	Connector	1	12197	Screw-idle	1	*A-12955	Kit-high altitude	1	57361	Diaphragm	1
12048	Grip-throttle	1	12198	Needle-idle	2	*12958	Label	1	57372	Screw-valve	2
12051	Spring-tension	2	12199	Spring-needle	2	*A-12961	Kit-throttle shaft	1	57374	Screen-fuel	1
12053	Shield-spring	1	A-12201	Pump-auto.	1	*A-12968	Kit-trigger & screw	1	57375	Screw-circuit	2
12053	Bushing-starter	1	A-12202	Plunger	1	*12972	Rope-starter	1	57376	Spring-throttle	1
12054	Grommet	1	A-12204	Plate-back	1	*12973	Lane-fuel	1	57377	Spring-idle	1
12055	Spring-starter	2	A-12214	Pulley & Cup	1	*12974	Lane-fuel & oil	1	57381	Screen-choke	2
12056	Pawl-starter	2	A-12222	Cap-oil filler	1	*12979	Plate-circuit	1	57382	Plate-circuit	1
12059-B	Bracket-handle	1	A-12225	Filter element	1	*A-12977	Carburetor	1	57383	Lever-metering	1
12062-1	Flange-carburetor	1	A-12227	Shaft-choke	1	22126	Key-hex	1	58279	Grommet	1
A-12068-1	Connecting Rod	1	A-12237	Kit-chain brake	2	22772	Paint-black	1	*58362-4	Clutch-B	1
12071	Worm	1	12238-1	Bracket-band	1	25136-5	Sleeve-steel	1	A-58455	Drum & Sprocket	1
12074-2	Shield-cylinder	1	12239	Washer-cupped	1	25475	Paint-red	1	58522	Shaft-choke	1
12078-1	Rod-throttle	1	12240	Spacer-out	1	25528	Key-hex	1	58537	Insert-rope	1
*12080-A	Gasket-muffler	1	A-12243-1	Guard-knobback	1	A-23886-A	Wrench-spanner	1	58548	Rope-starting	1
12089	Shield-pulley	1	A-12248	Cylinder	1	29759	Sleeve	1	58551	Valve-choke	2
*12091-1A	Latch-trigger	1	12249	Spring-metering	1	23846-1	Avril	1	58554	Filter-filter	2
12092	Lever-trigger	1	12250	Cover-metering	1	23846-2	Avril	1	58558	Shoe-clutch	2
12093	Lock-trigger	1	A-12261	Crankcase	1	A-23934	Wrench-spanner	1	A-58559	Clutch-18"	1
12095	"C" Ring	3	12253	Exchanger-heat	1	A-24280	Puller-rotor	1	A-58560	Cap-fuel filler	1
*12094-1A	Screw-trigger	1	*12254-A	Lane-pulse	1	A-24824	Wrench	1	59501	Gasket-fuel cap	1
12096	Bumper	2	A-12257-A	Piston & Pin	1	24828-A	Plug-seal	1	59502	Chain-bead	2
12100	Pin-rotator	4	A-12258	Kit-Hand Guard	1	24827-A	Plug-bearing	1	59503	Retainer	2
12101	Rotor	1	A-12265	Muffler	1	*24853	Shim-yellow	1	59509	Spring-tension	1
A-12107	Handle Bar	1	12268	Pin-insulator	2	*A-24871	Tool & plunger	1	59536	Lane-fuel & oil	1
12108-1	Bushing-flange	1	12269	Screen-air inlet	1	50558	Fitting-oil line	1	*A-59524	Filter-element	1
12110	Bushing-nylon	1	12270	Arrestor-spark	1	A-57850-3	Switch-grounding	1	59533	Fitting	1
A-12112	Nut-filter cover	1	*A-12272-A	Bumper-spiked	1	58753	Bolt-guide bar	2	71476	Pin-dowel	3
12117	Plate-spring	1	12277	Plate-circuit	1	58765	"C" Ring	1	72084-A1	Nut	1
12118	Baffle	1	*12278-A	Repair Kit	1	58631-2	Washer	1	75076	Key-Woodruff	1
12126	Gasket-oil cap	1	*12282-A	Seal	2	59051	Ball-choke	1			
A-12132	Screw-guide bar	3	12283	Plug-cylinder	1	52740	Grommet	1			
12133-1	Pin-guide bar	2	12285	Isolator	4	53571	Cover-clutch	1			
12134	Cover-gear	1	A-12286	Housing-engine	1	53580	Washer-thrust	1			
12135	Fitting-oil line	1	12288	Valve-throttle	1	53587	Bearing-roller	2			
A-12137	Adjuster-guide bar	2	12289	Washer-rotator	1	A-53590	Pick-up fuel	1			
12140	Nut-push on spring	1	12291	Spring-garter	1	53597	Spring-clutch	3			
12141	Lever-oil	1	*12292	Bumper	1	54083-1	Filter-felt	1			
A-12144	Pin & Plug	1	A-12294-1	Sprocket & Drum	1	54124	Bearing-needle	1			
12145	Knob-choke	1	A-12295-1	Cover-driveside	1	54155-A	Grip-starting rope	1			
12147	Bushing	1	12298	Washer	1	54182	Washer	1			
*12148-A	Rod-choke	1	A-12297-1	Cover-driveside	1	54226	Needle-inlet	1			
12150	Washer-valve	1	12298	Cable-tie	1	54231	Gasket-metering	1			
A-12153	Deflector-air	1	A-12299	Transformer	1	54238	Spring-choke	1			
12154	Place-clutch	1	12371-1	Screw-shoulder	1	54243	Screen-fuel inlet	1			
12156	"C" Ring	1	12375-1	Screw-shoulder	1	54688	Screw-metering	4			
A-12156	Lever-brake	1	12378	Cover-starter	1	55102	Lock-spring	1			
A-12157	Brake Band & Lever	1	12380	Receptacle	1	55107	Spring-rewind	1			
A-12160	Carburetor	1	12389	Module & Core	1	55109	Stud-starter	2			
*12161-1A	Deflector-air	1	A-12718	Lead-ground	1	55130-5	Spark Plug	1			
12162	Plate-guide bar	1	A-12719	Lead-module	1	A-55172	Funder-oil	1			
12163	Plate-guide bar	1	12768	Contact	2	55185	Bushing-rope	1			
						55388	Repair Kit	1			
						55760-2	Plate-clutch	1			

* Denotes new parts

FASTENING PARTS

50806	8-32 x 9/16	2
51198	Nut-5/16-18	4
51208	Nut-10-24	5
51233	Nut-3/8-24	1
52184	8-32 x 1-1/4	2
52215	8 x 3/8	2
52251	8-32 x 3/8	4
52256	8 x 1/4	2
*52258	1/4-20 x 5/8	1
52262	10-24 x 7/8	4
53048	Washer-#10	2
54099	Washer-8/8	1
55020	10-24 x 5/16	4
55022	10-24 x 3/4	18
55023	10-24 x 1-1/4	4
55024	10-24 x 1/2	4
55025	10-24 x 1-3/4	2
55026	8-32 x 3/8	11
55027	8-32 x 1/2	2
55031	10-24 x 3/8	2

HOMELITE

A. GARDNER
DIVISION

PORT CHESTER, NEW YORK, U.S.A. 10573

E2647 DBZ