

REMINGTON CHAIN SAW

Illustrated Parts List

SUPER 754

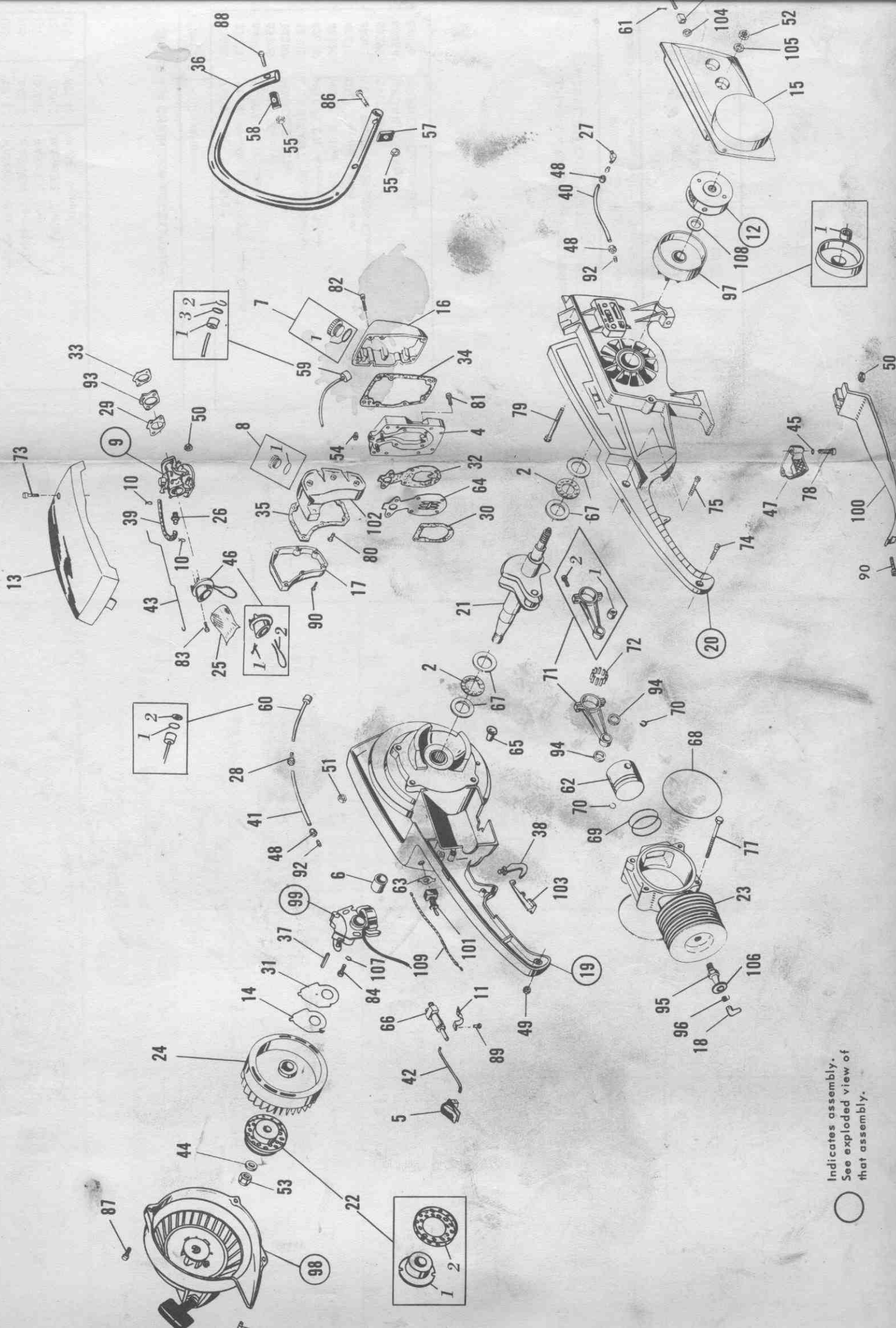
IMPORTANT

DO NOT USE KEY NUMBERS WHEN ORDERING SERVICE PARTS.
ALWAYS ORDER COMPONENTS BY PART NUMBER AND DESCRIPTION.
INCLUDE MODEL AND SERIAL NUMBERS.

Key NO.	Part NO.	Description	QTY	Key NO.	Part NO.	Description	QTY
2	49628	BEARING, Thrust	2	9-30	49135*	SCREW & LOCKWASHER, Shutter, Throttle	1
3	60967	BLOCK, Adjusting, Chain	1	-31	101088B	SEMS, Retaining, Pump	6
4	63772	BODY ASSY, Tank, Fuel, Includes:	1	-32	63883	SHAFT & LEVER, Choke	1
	62067	STUD (not shown)	2	-33	63878	SHAFT & LEVER, Throttle	1
5	61510	BUTTON, Oiler	1	-34	62664	SHUTTER, Choke	1
6	60144	CAM	1	-35	20958	SHUTTER, Throttle	1
7	49015	CAP ASSY, Fuel, Includes:	1	-36	43151	SPRING, Friction, Choke	1
-1	60303	RING, "O"	1	-37	49156*	SPRING, Return, Shaft, Throttle	1
8	64395	CAP ASSY, Oil, Includes: (After JL3843)	1	-38	43150*	SPRING, Screw, Mixture, High-Speed Mixture, Low-Speed	1
-1	64959	RING, "O"	1	-39	63876*	SPRING, Screw, Regulating, Idle-Speed	1
8	49313	CAP ASSY, Oil, Includes: (Prior to JL3843)	1	-40	62662*	SPRING, Tension, Inlet	1
-1	20385	RING, "O"	1	-41	49984	WASHER, Screw, Mixture, High-Speed Mixture, Low-Speed	1
9	65300	CARBURETOR, Includes:	1	-42	63865	WASHER, Thick, Screw, Mixture, High-Speed	1
-1	63871	BODY, Pump	1	-43	62669	VALVE, Check, Nozzle	1
-2	42791	BUSHING, Shaft, Throttle	2	-44	63884*	GASKET SET	1
-3	43154	CLIP, Shaft, Throttle	1	-45	63885	REPAIR KIT	1
-4	63877	COVER, Diaphragm	1	10	49132	CLAMP, Line, Fuel	2
-5	63870	COVER, Strainer, Fuel	1	11	61680	CLAMP, Pump, Oil	1
-6	62670*	DIAPHRAGM, Main	1	12	60861	CLUTCH ASSY, Includes:	1
-7	64921*	DIAPHRAGM, Pump	1	-1	60089	PLATE, Drive	1
-8	49144	GASKET, Cover Strainer	1	-2	60088	PLUNGER	2
-9	62661	GASKET, Diaphragm	1	-3	60087	SHOE (Set of 2)	1
-10	63866	GASKET, Pump	1	-4	60090	SPRING, Plunger	2
-11	48604	GASKET, Screw, Retaining, Cover, Strainer	1	-5	60860	SPRING, Shoe	2
-12	43649	GASKET, Seat, Inlet	1	13	60120	COVER, Carburetor	1
-13	49150*	LEVER, Control, Inlet	1	14	60148	COVER, Dust	1
-14	63867	LEVER, Throttle	1	15	62333	COVER, Sprocket	1
-15	38472	LOCKWASHER, Clip, Shaft, Throttle	1	16	61616	COVER, Tank, Fuel	1
-16	103211	LOCKWASHER, Retaining, Lever, Throttle	1	17	61605	COVER, Tank, Oil	1
-17	49149*	NEEDLE, Inlet, Seat & Gasket	1	18	60030	COVER, Terminal, Sparkplug	1
-18	49949	PACKING, Screw, Mixture, High-Speed Screw, Mixture, Low-Speed	1	19	61216	COVER ASSY, Crankcase, Fan-Side, Includes:	1
-19	20939	PIN, Plunge	1	-1	60060	BEARING, Roller	1
-20	104982*	PLUG, Welch, Channel	1	-2	65159	SEAL	1
-21	63874*	SCREEN, Strainer	1	20	64091	COVER ASSY, Crankcase, Sprocket-Side, Includes:	1
-22	43147	SCREW, Drain, Chamber, Diaphragm	1	-1	60060	BEARING, Roller	1
-23	49151*	SCREW, Lever, Control, Inlet	1	-2	60058	SEAL	1
-24	63872*	SCREW, Mixture, High-Speed	1	-3	60079	WASHER	1
-25	63868*	SCREW, Mixture, Low-Speed	1	21	63623A	CRANKSHAFT	1
-26	63873*	SCREW, Regulating, Idle-Speed	1	22	65312	CUP ASSY, Starter, Includes:	1
-27	42790	SCREW, Retaining, Clip, Shaft, Throttle	1	-1	64242	CUP	1
-28	63869*	SCREW, Retaining, Cover, Strainer	1	-2	65169	SCREEN	1
-29	19691A	SCREW, Retaining, Lever, Throttle	1	23	63584	CYLINDER	1

* Parts Included in Repair Kit

Key NO.	Part NO.	Description	QTY	Key NO.	Part NO.	Description	QTY
	62538	DECAL, Cover, Carburetor (not shown)	1	75	60080A	SCREW, Bind HD, #10-24x1.50, Handle, Rear	1
	64701	DECAL, Side, Left (not shown)	1	76	60966	SCREW, FIL-HD, .31-18x2.50, Adjusting Chain	1
	64712	DECAL, Side, Right (not shown)	1	77	100930	SCREW, Flat HD, .31-24x3.62, Cover, Crankcase	4
	60140	DECAL, Tank, Fuel (not shown)	1	78	62583A	SCREW, HEX-HD, .25-20x1.25, Muffler	2
	66633	DECAL, Trademark (not shown)	1	79	102257	SCREW, HEX-HD, .38-24x2.13, Bar, Guide	2
24	60142	FAN	1	80	60050A	SCREW, Sealed, .25-20x.75, Tank, Oil	3
25	60071	FILTER, Air	1	81	60050	SCREW, Sealed, .25-20x1.00, Tank, Fuel	4
26	61379A	FITTING, Line, Fuel	1	82	101129D	SEMS, FIL-HD, #10-24x.88, Tank, Fuel	8
27	61649	FITTING, Oil, Exhaust	1	83	101374B	SEMS, FIL-HD, #10-32x.38, Manifold	2
28	61551	FITTING, Oil, Inlet	1	84	101168B	SEMS, FIL-HD, .25-20x.75, Ignition	2
29	63575	GASKET, Carburetor	1	85	101169B	SEMS, FIL-HD, .25-20x.87 Shroud	2
30	40893	GASKET, Cylinder	1	86	101173B	SEMS, FIL-HD, .25-20x1.50, Handle, Front, Upper	2
31	60149	GASKET, Ignition	1	87	101174B	SEMS, FIL-HD, .25-20x1.75, Shroud, Upper	1
32	60845	GASKET, Plate, Reed	1	88	101672B	SEMS, Oval-HD, .25-20x1.25, Handle, Front	1
33	60616A	GASKET, Spacer	1	89	41057D	SEMS, Pan HD, #10-24x.50, Clamp	1
34	60048	GASKET, Tank, Fuel	1	90	62872A	SEMS, Pan HD, #10-24x.62, Cover, Tank, Oil Support, Handle	6
35	61645	GASKET, Tank, Oil	1	92	61661	SLEEVE, Compression	3
36	64704	HANDLE, Front	1	93	63571	SPACER, Carburetor	1
37	60078	KEY, Straight, Fan	1	94	61411	SPACER, Piston	2
38	61198	LEVER, Throttle	1	95	65290	SPARKPLUG	1
39	63776	LINE, Fuel	1	96	60029	SPRING, Connector	1
40	61535C	LINE, Oiler, Discharge	1	97	A2-408	SPROCKET ASSY, Includes:	1
41	61535A	LINE, Oiler, Suction	1	-1	65197	BEARING, Roller	1
42	61542	LINK, Pump, Oil	1	98	64240	STARTER ASSY, Includes:	1
43	60074A	LINK, Throttle	1	-1	64350	BUSHING, Starter	1
44	65739	LOCKWASHER, .44 ID, Cup, Starter	1	-2	60820D	CORD	1
45	22794	LOCKWASHER, .28 ID, Muffler	2	-3	64431	HANDLE	1
46	63572	MANIFOLD ASSY, Includes:	1	-4	64244	HOUSING	1
-1	49923	PIN, Cotter	1	-5	64432	INSERT, Handle	1
-2	61142B	SPRING	1	-6	60807	RING, Retainer	1
47	62206	MUFFLER	1	-7	60816A	ROTOR	1
48	61660	NUT, HEX, Tubing	3	-8	60832	SHOE, Friction	1
49	103006	NUT, HEX, #10-24, Handle, Rear	2	-9	60809	SPRING, Brake	1
50	103120B	NUT, HEX, .25-28, Support, Carburetor	3	-10	60817A	SPRING, Rewind	1
51	49873	NUT, HEX, .31-24, Cover, Crankcase	4	-11	64078	WASHER, Fiber	2
52	118315	NUT, HEX, .38-24, Bar, Guide	2	-12	60808	WASHER, Retainer, Brake	1
53	103123	NUT, HEX, .44-20, Cup, Starter	1	-13	103638	WASHER, Rope	1
54	103046	NUT, SQ, #10-24, Cover, Carburetor	1	99	60052	STATOR ASSY, Ignition, Includes:	1
55	103048	NUT, SQ, .25-20, Handle, Front	3	-1	60146	BREAKER	1
57	60085	PAD, Handle, Retaining, Lower	2	-2	60150	COIL	1
58	60086	PAD, Handle, Retaining, Upper	1	-3	60145	CONDENSER	1
59	63780	PICKUP ASSY, Fuel, Includes:	1	-4	60155	INSULATOR, Stud, Connection, Inside	1
-1	64815	FILTER	1	-5	60154	INSULATOR, Stud, Connection, Outside	1
-2	64915	RING	1	-6	103202	LOCKWASHER	2
-3	103641	WASHER	2	-7	60202	NUT	2
60	63781	PICKUP ASSY, Oil, Includes:	1	-8	60158	SCREW, Condenser	1
-1	63784	INSERT	1	-9	60156	SEMS, Breaker	1
-2	63785	SCREEN	1	-10	60151	SPRING, Clip, Coil	1
61	44279	PIN, Spring, Screw, Adjusting, Chain	1	-11	60153	SPRING, Cover, Clamp	1
62	63622	PISTON	1	-12	60143	STATOR	1
63	60126	PLATE, Switch	1	-13	60157	STUD, Connection	1
64	60842	PLATE, Reed	1	-14	60152	WIPER, Felt	1
65	62157A	PLUG, Cover, Crankcase	1	-15	60147	WIRE, Sparkplug	1
66	61541	PUMP, Oil	1	100	63265	SUPPORT, Handle	1
67	60084	RACE, Thrust	4	101	62209	SWITCH, Stop	1
68	21916	RING, "O", Cylinder	2	102	64702	TANK, Oil	1
69	65293	RING, Piston (Set of 2)	1	103	61195	THROTTLE	1
70	43499	RING, Retaining, Piston	2	104	60969	WASHER, Adjusting, Chain	1
71	42824	ROD ASSY, Connecting, Includes:	1				
-1	11335	BEARING, Roller	1				
-2	42492	SCREW	2				
72	60582A	ROLLER SET (Set of 28)	1				
73	60020	SCREW, Bind HD, #10-24x.62, Cover, Carburetor	1				
74	60080	SCREW, Bind HD, #10-24x1.12, Handle, Rear	1				



○ Indicates assembly.
See exploded view of
that assembly.

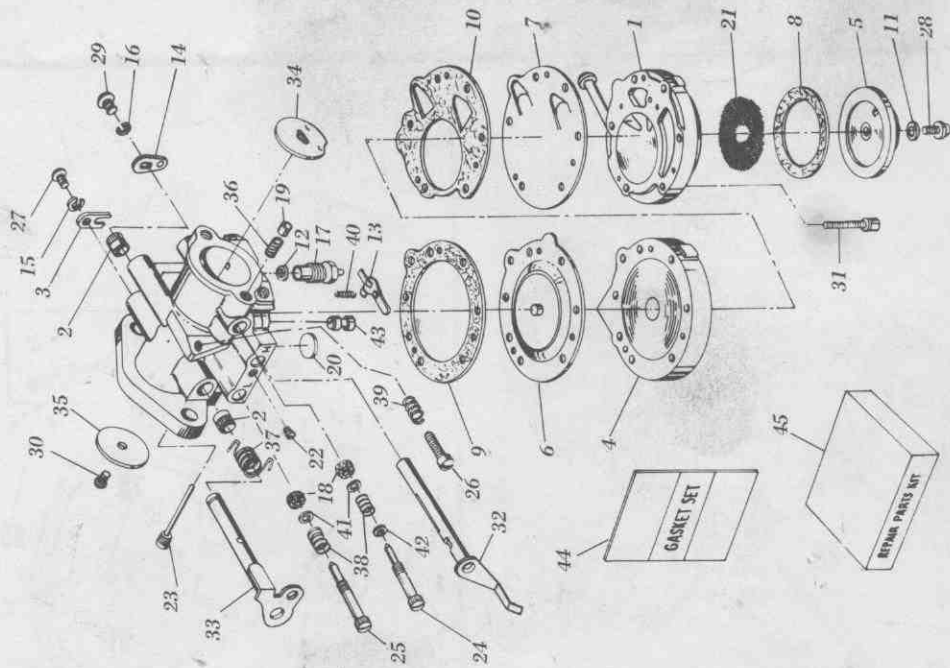
NO.	NO	Description	Y
105	62187	WASHER, Bar, Guide	2
106	64055	WASHER, Sparkplug	1
107	103607	WASHER, Stator	2
108	60062	WASHER, Thrust	1
109	62248	WIRE, Ground	1

SUPER 754 CHAIN SAW ACCESSORIES

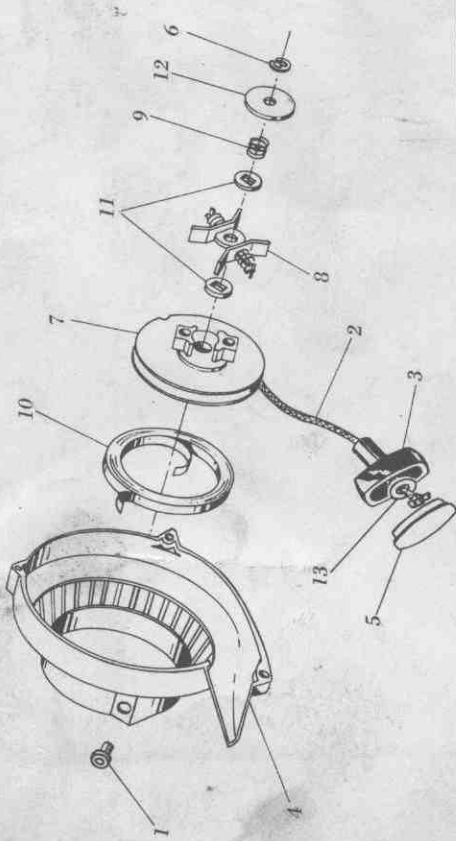
Part NO.	Description
13688	FILE, Flat, 8"x 5/8"
35219	FILE, Round, 8"x 7/32", .404 Chain
64889	GUIDE, File, .404
65306	GUN, Grease
14207	HANDLE, File
18347	LUBRICANT, Nose, Roller
62656	MUFFLER, Arrestor, Spark
48520	NOSE, Roller, 2½
48411	OIL, Engine, Chain Saw
48535	SET, GAGE, .025-.035 Clearance
65298	STICKER
66364	WEDGE, Cicolac
64056	WRENCH, Combination

CHAINS - GUIDES - FOR REMINGTON MODEL 754 CHAIN SAWS - DIRECT DRIVE

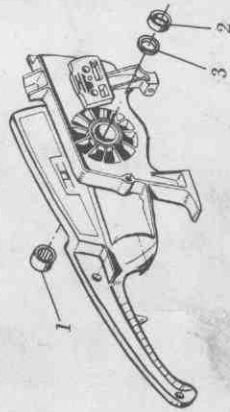
Capacity	Roller Nose Guide, Bar	Welded Nose Guide, Bar	Chain No.
17"	A 2815	A 0815	49PF62
21"	A 2817	A 0817	49PF72
24"	A 2820	A 0820	49PF79
31"	A 2825	A 0825	49PF95



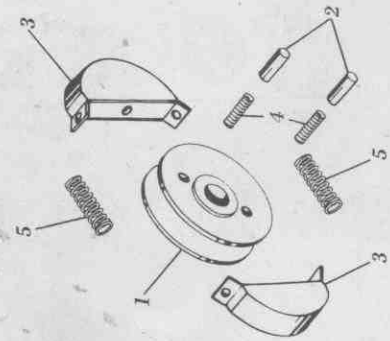
9



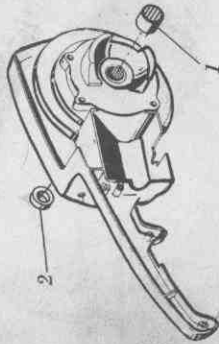
98



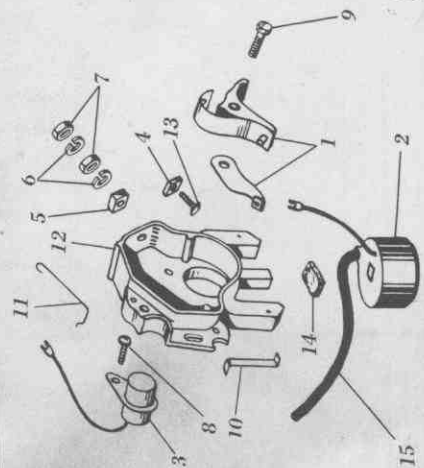
20



12



19



99