

REMINGTON CHAIN SAW

Illustrated Parts List

SL-10
SL-10A

COMPRESSION
RELEASE

IMPORTANT

DO NOT USE KEY NUMBERS WHEN ORDERING SERVICE PARTS.
ALWAYS ORDER COMPONENTS BY PART NUMBER AND PART NAME.
INCLUDE MODEL AND SERIAL NUMBER.

Key NO.	Part NO.	Description	QTY	Key NO.	Part NO.	Description	QTY
1	66376	BAFFLE, Muffler	1	19-7	65019	SEAL, Oil	1
2	65018	BEARING, Thrust	2	-8	64379	SEMS, Pan HD, #6 x .50	14
3	64327	BELLOWS, Link, Throttle	1	-9	64766	STUD	1
4	65064	BLOCK, Adjusting, Bar, Guide	1	19	66134	CRANKCASE ASSY, (SL-10A only) Includes:	1
5	66372	BODY, Muffler	1	-1	65072	BEARING, Roller	1
6	65783	BRACKET, Carburetor	1	-2	65005	COVER	1
7	64409	BUTTON, Choke	1	-3	66133	CRANKCASE	1
8	64329R	CAP ASSY, Fuel, Includes:	1	-4	65609	FITTING, Valve	1
-1	60303	RING, "O"	1	-6	65060	GASKET, Tank	1
9	64395	CAP ASSY, Oil, Includes:	1	-7	65019	SEAL, Oil	1
-1	64959	RING, "O"	1	-8	64379	SEMS, Pan HD, #6 x .50	14
10	66960	CARBURETOR, Includes:	1	-9	64766	STUD	1
-1	64453*	DIAPHRAGM, Main	1	20	65012	CRANKSHAFT	1
-2	64827*	DIAPHRAGM, Pump	1	21	65319	CUP ASSY, Starter, Includes:	1
-3	64452	GASKET, Diaphragm	1	-1	65618	CUP	1
-4	64457	GASKET, Pump	1	-2	65213	SCREEN	1
-5	64465*	NEEDLE, Inlet	1	22	65996	CYLINDER	1
-6	64448	PLUG	1	-1	64954	INSERT, Helicoil	2
-7	65731*	SCREW, Mixture, High-Speed	1	23	65214	FAN	1
-8	64459*	SCREW, Mixture, Low-Speed	1	24	65071	FILTER, Air	1
-9	67474	GASKET SET	1	25	64967	FILTER, Pickup, Oil, (SL-10 only)	1
-10	67472	REPAIR KIT	1	26	66485	FILTER, Pickup, Oil, (SL-10A only)	1
11	66688	CLUTCH ASSY, Includes:	1	26	64364	FITTING, Oil, Exhaust, (SL-10 only)	1
-1	66845	PLATE, Drive	1	27	65727	FITTING, Oil, Exhaust, (SL-10A only)	1
-2	66846	SHOE (set of 2)	1	27	64969	FITTING, Oil, Intake	1
-3	66847	SPRING	2	28	65062	GASKET, Carburetor	1
12	65451	COVER, Carburetor	1	29	65061	GASKET, Cylinder	1
13	66694	COVER, Clutch	1	30	66036	GRIP, Handle, Rear	1
14	66034	COVER, Handle, Rear	1	31	62845	GROMMET, Carburetor	2
15	66377	COVER, Muffler	1			Link, Choke	1
16	60030	COVER, Sparkplug	1	32	66157	HANDLE, Front	1
17	65008	COVER, Sprocket	1	-1	66035	GRIP, Handle, Front	1
18	65054	COVER ASSY, Crankcase, (SL-10 only) Includes:	1	33	66501	HANDLE ASSY, Rear, (SL-10 only) Includes:	1
-1	65072	BEARING, Roller	1	-1	103700	PIN, Cotter, .06 x .50	1
-2	65019	SEAL, Oil	1	-2	105212	PIN, Dowel	1
-3	65028	STUD, Bar, Guide	2	-3	65708	VALVE	1
18	66136	COVER ASSY, Crankcase, (SL-10A only) Includes:	1	33	66152	HANDLE ASSY, Rear, (SL-10A only) Includes:	1
-1	65072	BEARING, Roller	1	-1	103700	PIN, Cotter, .06 x .50	1
-2	65019	SEAL, Oil	1	-2	105212	PIN, Dowel	1
-3	65028	STUD, Bar, Guide	1	-3	65708	VALVE	1
19	66185	CRANKCASE ASSY, (SL-10 only) Includes:	1	34	104364	KEY, Woodruff, Fan	1
-1	65072	BEARING, Roller	1	35	65050	KNOB, Cover, Carburetor	1
-2	65005	COVER	1	36	66739	LIMITER, Reed	1
-3	66186	CRANKCASE	1	37	65045	LINE ASSY, Oil, Exhaust	1
-5	60383	FITTING, Vent	1	38	65043	LINE ASSY, Oil, Intake, (SL-10 only)	1
-6	65060	GASKET	1				

*Parts Included in Repair Kit #66567

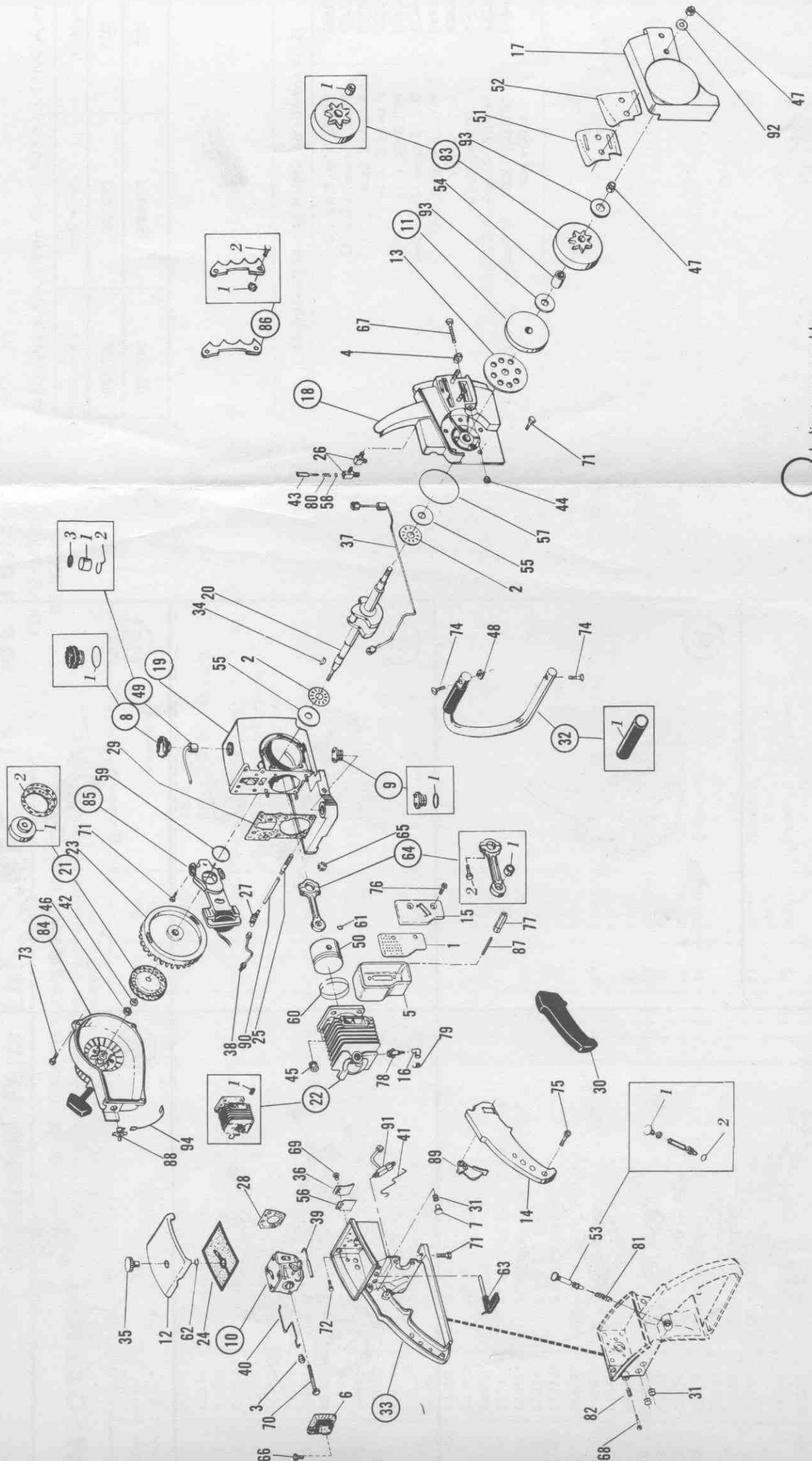
Key NO.	Part NO.	Description	QTY
39	65063	LINK, Choke	1
40	65041	LINK, Throttle	1
41	66153	LINK, Valve, Shut-off, (SL-10A only)	1
42	103268	LOCKWASHER, .31 ID, Cup, Starter	1
43	66032	NEEDLE, Adjustment, Oiler, (SL-10A only)	1
44	64442	NUT, HEX, #12-24, Adjusting, Bar, Guide	1
45	64923	NUT, HEX, .25-28, Cylinder, (With Lockwasher)	4
46	103141	NUT, HEX, .31-24, Cup, Starter	1
47	118344	NUT, HEX, .31-24, Guide, Bar	2
		Sprocket	1
48	103048	NUT, SQ, .25-20, Handle	1
49	63780	PICKUP ASSY, Fuel, Includes:	1
-1	64815	FILTER, Fuel	1
-2	64915	RING, Snap	1
-3	103641	WASHER, .25 ID	2
50	65602	PISTON	1
51	65080	PLATE, Bar, Guide, Inside	1
52	65081	PLATE, Bar, Guide, Outside	1
53	65728	PLUNGER, Pump, Oil	1
-1	64409	BUTTON	1
-2	27785	RING, "O", .30 ID, Pump, Oil	1
54	65022	RACE, Sprocket	1
55	65036	RACE, Thrust	2
56	65037A	REED	1
57	65059	RING, "O", 2.11 ID, Crankcase	1
58	64682	RING, "O", Needle, Adjusting (SL-10A only)	1
59	64949	RING, "O", .99 ID, Plate, Stator	1
60	65316	RING, Piston, (Set of 2)	1
61	64306	RING, Retaining, Pin, Piston	2
62	64386	RING, Snap, Cover, Carburetor	1
63	65997	ROD, Compression Release	1
64	65605	ROD, Connecting, Includes:	1
-1	25508	BEARING, Roller	1
-2	64506	SCREW, Rod, Connecting	2
65	65020A	ROLLER, Crankpin, (Set of 26)	1
66	65787	SCREW, HEX-HD, #12-24 x .50, Bracket	1
67	101154A	SCREW, FIL-HD, #12-24 x 1.75, Adjusting, Bar, Guide	1
68	64460†	SCREW, Idle-Speed	1
69	64406	SCREW, Pan HD, #4-40 x .25, Reed	2
70	66054	SEMS, HEX-HD, #10-32 x 1.81, Carburetor	2
71	64372	SEMS, HEX-HD, #12-20 x .62 Cover, Crankcase	5
		Handle, Rear	1
		Stator	3
72	64373	SEMS, HEX-HD, #12-24 x .75, Handle, Rear	4

Key NO.	Part NO.	Description	QTY
73	64374	SEMS, HEX-HD, #12-24 x .88, Starter, Housing	4
74	101672B	SEMS, Oval HD, .25-20 x 1.25 Handle, Front	2
75	63962A	SEMS, Pan HD, #8-32 x .62, Cover, Handle	2
76	66102	SEMS, HEX-HD, #10-32 x .38, Muffler	2
77	66378	SPACER, Muffler	2
78	65292	SPARKPLUG	1
79	60029	SPRING, Connector, Sparkplug	1
80	64689	SPRING, Needle, Adjusting, (SL-10A only)	1
81	64366	SPRING, Pump, Oil	1
82	64461†	SPRING, Screw, Idle-Speed	1
83	P7-259	SPROCKET ASSY, Includes:	1
		BEARING, Roller	1
-1	65021	STARTER ASSY, Includes:	1
84	65016	BUSHING, Starter	1
-1	64350**	CORD	1
-2	65858	HANDLE, Starter	1
-3	66671	HOUSING, Starter	1
-4	65082	INSERT, Handle	1
-5	66672	RING, Retainer	1
-6	60807	ROTOR, Starter	1
-7	66148	SHIELD, Dust	1
-8	66159	SHIELD, Spring	1
-9	65207	SHOE, Friction	1
-10	65208	SPRING, Brake	1
-11	60809	SPRING, Rewind	1
-12	65859	WASHER, Fiber	1
-13	64078	STATOR ASSY, Ignition, Includes:	1
85	65215	BREAKER	1
-1	65226	COIL	1
-2	65225	CONDENSER	1
-3	65224	COVER, Dust	1
-4	65221	GASKET, Cover	1
-5	65222	SEAL, Felt	1
-6	65227††	WIPER, Felt	1
-7	65332††	WIRE, Sparkplug	1
-8	65229	STICKER KIT	1
86	66308	NUT, HEX, #12-24 x .62	2
-1	64442	SEMS, HEX-HD, #12-20 x .62	2
-2	64372	STUD, Muffler	2
87	66325	SWITCH, Stop	1
88	64345	THROTTLE	1
89	64326R	TUBE, Pickup, Oil	1
90	64974	VALVE ASSY, Shut-off, (SL-10A only)	1
91	66031	WASHER, .31 ID x .75 OD, Bar, Guide	2
92	65051	WASHER, .31 ID x .83 OD, Thrust, Sprocket	2
93	65035	WIRE, Ground	1
94	64357		

† Parts Included in Carburetor #65406

†† Parts Included in Breaker #65226

** Parts Included in Housing #65082



Indicates assembly.
See exploded view of
that assembly.

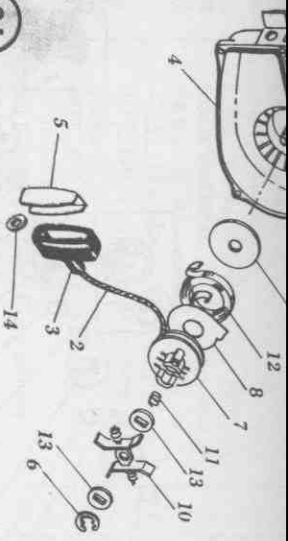
CHAIN & GUIDE BAR FOR SL-10 AND SL-10 A CHAIN SAW

Capacity	Guide Bar	Chain NO.
15"	P0013N	20PF80
15**	P1013N	20PF80

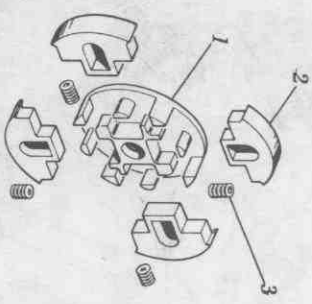
SL-10 and SL-10A CHAIN SAW ACCESSORIES

13688	FILE, Flat, 8.0 x .62
66487	FILE, Round, 6.0 x .12
60729	GREASE GUN
14207	HANDLE, File
66488	HOLDER, File
48411	OIL, Engine, Chain Saw
65940	ROLLERNOSE, 2.0"
66505	SET, Gauge
66375	SCREEN, Muffler
65940	WEDGE, Plastic, 7.5 x 2.8 x 1.1
66364	WRENCH, HEX, .50 Socket, .75 Socket
65479	& Screwdriver

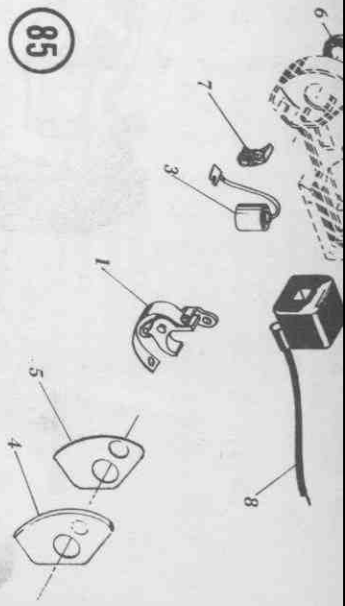
84



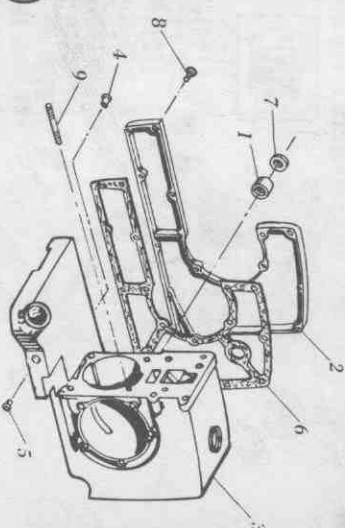
11



85



19



18

