

REMINGTON CHAIN SAW

Illustrated Parts List

BANTAM

STARTING WITH
SERIAL No. JA 7082

IMPORTANT

DO NOT USE KEY NUMBERS WHEN ORDERING SERVICE PARTS.

ALWAYS ORDER COMPONENTS BY PART NUMBER AND PART NAME.
INCLUDE MODEL AND SERIAL NUMBER.

Key No.	Part No.	Description	QTY	Key No.	Part No.	Description	QTY
2	60109	BAR, Upper Hand Retaining	1	16	64091	COVER, Crankcase Sprocket Side	1
3	49628	BEARING, Thrust	2	- 1	60060	BEARING, Needle	1
4	49619	BLOCK, Chain Adjusting	1	- 2	60058	SEAL	1
5	60849	BODY ASSY., Fuel Tank	1	- 3	60079	WASHER	1
6	60117	BODY, Muffler	1	17	61616	COVER, Fuel Tank	1
7	60144	CAM	1	18	60148	COVER, Ignition	1
8	49015	CAP, Fuel	1	19	61605	COVER, Oil Tank	1
- 1	60303	RING "O"	1	20	60030	COVER, Sparkplug Terminal	1
9	49313	CAP ASSY., Oil	1	21	62333	COVER, Sprocket	1
- 1	20385	RING "O"	1	22	60016	CRANKSHAFT	1
10	62526	CARBURETOR	1	22A	60796A	CUP, Starter	1
- 1	60133	BALL, Choke Shaft	1	23	60887	CYLINDER ASSY.	1
- 2	60178	CHOKE LEVER & SHAFT ASSY.	1	60852	DECAL, Left Side (not shown)	1	
- 3	62569	COVER, Diaphragm	1	60853	DECAL, Right Side (not shown)	1	
- 4	62570	DIAPHRAGM ASSY., Fuel Control	1	62538	DECAL, Carb. Cover (not shown)	1	
- 5	62561	DIAPHRAGM PUMP ASSY.	1	60140	DECAL, Gas Tank (not shown)	1	
- 6	62562	GASKET, Diaphragm Cover	1	60071	ELEMENT, Air Filter	1	
- 7	62560	HOUSING ASSY., Pump	1	24	60142	FAN	1
- 8	62572	KIT, Recarburation (not shown)	1	25	60075	FITTING, Fuel Line	1
- 9	62563	LEVER, Fuel Control	1	26	61649	FITTING, Oil	1
- 10	62566	NEEDLE, High Speed Adjusting	1	27	61551	FITTING, Nut, Sleeve	1
- 11	62564	NEEDLE & SEAT ASSY.	1	28	60118	FLANGE, Muffler	1
- 12	60183	PIN, Diaphragm Lever	1	29	60046	GASKET, Carburetor	1
- 13	60188	PLUG, Welsh	1	30	60048	GASKET, Fuel Tank	1
- 14	60189	PLUG, Welsh	1	31	60149	GASKET, Ignition	1
- 15	60197	SCREW, Choke & Throttle Valve	4	32	61645	GASKET, Oil Tank	1
- 16	60199	SCREW, Diaphragm Cover & Pump Housing	10	33	60845	GASKET, Reed Plate	1
- 17	62565	SCREW, Idle, Adjusting	1	34	40893	GASKET, Reed Plate	1
- 18	60196	SCREW, Throttle Adjusting	1	35	62335	GRIP, Handle	1
- 19	60194	SPRING, Choke Shaft	1	36	64093	HANDLE ASSY., Including Grip	1
- 20	62567	SPRING, Idle & High Speed Adjusting Screw	2	37	60078	KEY, Straight, Fan	1
- 21	60190	SPRING, Throttle Adjusting Screw	1	38	62248	LEAD WIRE	1
- 22	60193	SPRING, Throttle Shaft	1	39	61198	LEVER, Throttle Assy.	1
- 23	60176	THROTTLE SHAFT & LEVER ASSY	1	40	48970F	LINE, Fuel	1
- 24	60175	VALVE, Throttle	1	41	61535C	LINE, Oiler, Discharge	1
- 25	60177	VALVE, Choke	1	42	61535A	LINE, Oiler, Suction	1
11	49132	CLAMP, Fuel Line	2	43	61542	LINKAGE, Oil Pump	1
12	61680	CLAMP, Oil Pump	1	44	22794	LOCKWASHER, Muffler	2
13	60861	CLUTCH ASSY.	1	45	46A	LOCKWASHER, Starter Cup	1
- 1	60089	DRIVE PLATE ASSY.	1	46	60009A	MANIFOLD, Air Filter	1
- 2	60088	PLUNGER	2	47	61660	NUT, Hex, Tubing	2
- 3	60087	SHOE	2	48	103123	NUT, Hex, Starter Cup	1
- 4	60090	SPRING	2	49	103046	NUT, Sq., Carb. Cover, #10-24	1
- 5	60860	SPRING	2	50	103120B	NUT, Hex, Shield, Carb., .250-28	3
14	60120	COVER ASSY., Carburetor	1	51	49873	NUT, Hex, .312-24	4
15	61216	COVER, Crankcase, Fan Side	1	52	118315	NUT, Hex, Guide Bar, .375-24	2
- 1	60060	BEARING, Needle	1	53	103006	NUT, Hex, Handle, #10-24	2
- 2	48529	SEAL	1	54	103048	NUT, Sq., Handle, .250-20	3
				55	61752	NUT, Molly, #10-24	2
				56	60082	PAD, Handle	1

CS 2-01

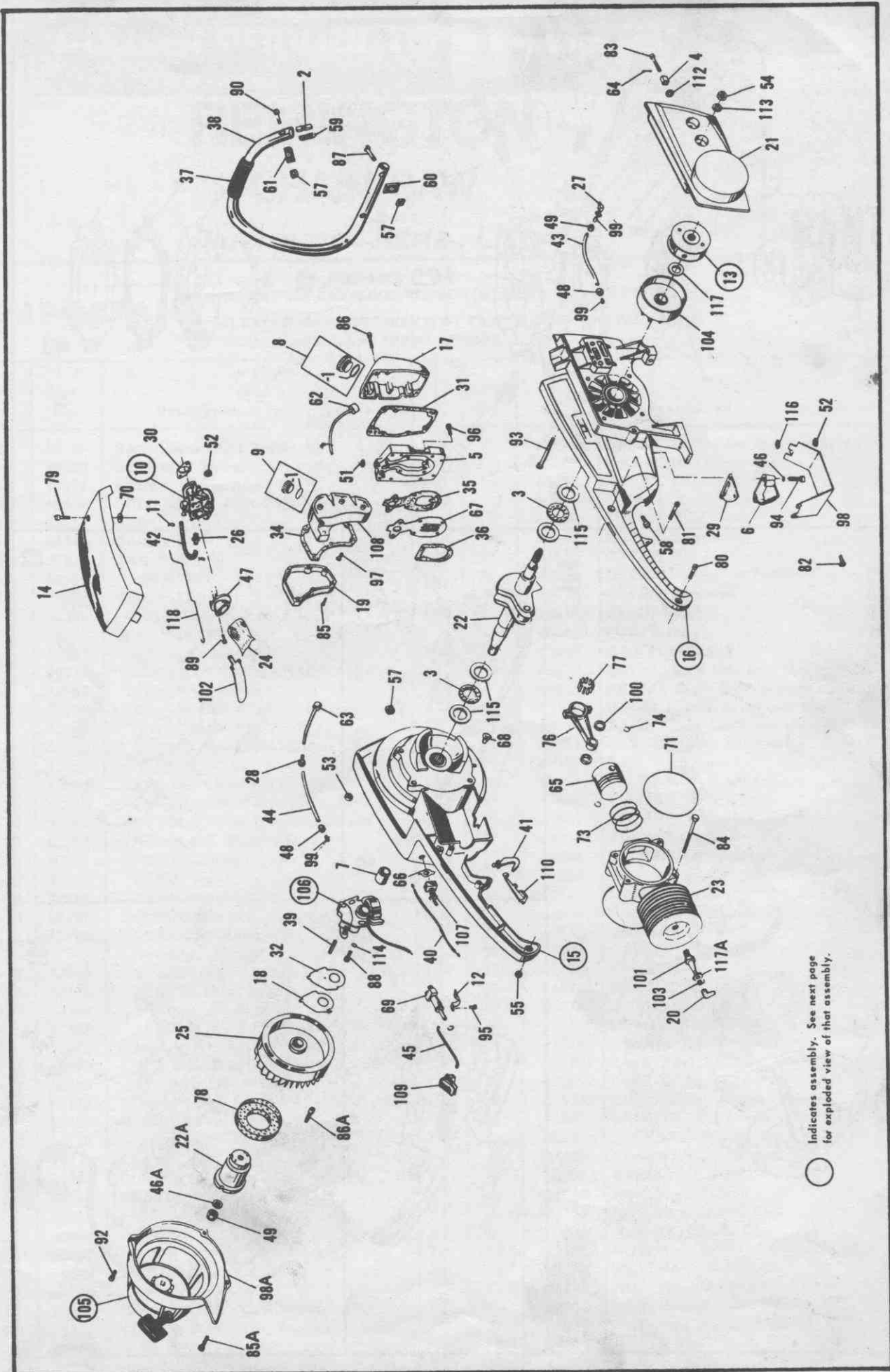
Key No.	Part No.	Description	QTY
60	60085	PAD, Handle, Retaining, Lower	2
61	60086	PAD, Handle, Retaining, Upper	1
62	63780	PICK-UP ASSY., Fuel, (Includes:)	1
-1	63782	FILTER	1
-2	63783	RING	1
-3	103609	WASHER	1
63	63781	PICK-UP ASSY., Oil (Includes:)	1
-1	63784	INSERT	1
-2	63785	SCREEN	1
64	44279	PIN, Spring, Chain, Adj. Screw	1
65	35263B	PISTON ASSY.	1
66	60126	PLATE, On-Off	1
67	60025	PLATE, Reed Assy.	1
68	62157A	PLUG	1
69	61541	PUMP, Oil	1
70	44905	RING, Grip, Carb. Cover	1
71	21916	RING "O", Cylinder	2
73	65293	RING, Piston (Set of 3)	1
74	24856	RING, Retaining, Piston Pin	2
76	42824A	ROD ASSY., Connecting	1
-1	21909	BEARING, Needle	1
-2	42492	SCREW	2
77	60582A	ROLLER SET (28 to a set)	1
78	61148	SCREEN, Rotary	1
79	60020	SCREW, Bind Hd., Carb. Cover, #10-24x.62	1
80	60080	SCREW, Bind Hd., Handle, #10-24x1.12	1
81	60080A	SCREW, Bind Hd., Handle, #10-24x1.50	1
82	101126B	SCREW, Fil Hd., Shield, Muffler, #10-24x.50	2
83	60966	SCREW, Fil Hd., Chain Adjusting, .312-18x2.50	1
84	100930	SCREW, Crankcase Cover, .312-24x3.62	4
85	62872A	SCREW, Pan Hd., Cover, Oil Tank, #10-24x.62	6
85A	101167B	SCREW, Fil Hd., Starter, .250-20x.62	4
86	101129D	SCREW, Fil Hd., Fuel Tank, #10-24x.88	8
86A	101164A	SCREW, Fil Hd., Fan, .250-20x.37	3
87	101673B	SCREW, Oval Hd., Handle, .250-20x1.50	2
88	101168B	SCREW, Fil Hd., Ignition, .250-20x.75	2
89	101374B	SCREW, Fil Hd., Manifold, #10-32x.38	2
90	101170B	SCREW, Fil Hd., Handle, .250-20x1.00	1
91	101169B	SCREW, Fil Hd., Shroud, .250-20x.87	2
92	101174B	SCREW, Fil Hd., Shroud, Upper, .250-20x1.75	1
93	102257	SCREW, Hex Hd., Guide Bar, .375-24x2.13	2

Key No.	Part No.	Description	QTY
94	60245	SCREW, Hex Hd., Muffler, .250-20x2.00	2
95	41057D	SCREW, Pan Hd., Clamp, #10-24x.50	1
96	60050	SCREW, Sealed, Fuel Tank, .250-20x1.00	4
97	60050A	SCREW, Sealed, Oil Tank, .250-20x.75	3
98	60385	SHIELD, Muffler	1
98A	61124A	SHROUD ASSY.	1
99	61661	SLEEVE, Compression	3
100	49016	SPACER, Piston	2
101	65290	SPARK PLUG	1
102	61142	SPRING ASSY., Air Filter	1
103	60029	SPRING, Connector	1
104	A2-408	SPROCKET & CLUTCH DRUM ASSY.	1
-1	60159	BEARING	2
-2	60160	SEAL	1
105	64230	STARTER ASSY.	1
-1	60818	HANDLE	1
-2	61173	HOUSING, Starter	1
-3	60832	PAWL ASSY.	1
-4	60816A	PULLEY	1
-5	60820D	ROPE	1
-6	60809	SPRING, Brake	1
-7	60817A	SPRING, Rewind	1
-8	60808	WASHER, Brake Retainer	1
-9	64078	WASHER, Brake	2
106	60052	STATOR PLATE ASSY.	1
-1	60150	COIL GROUP	1
-2	60145	CONDENSER	1
-3	60146	CONTACT SET	1
-4	60154	INSULATOR, Conn. Stud, Outside	1
-5	60155	INSULATOR, Conn. Stud, Inside	1
-6	60147	LEAD, High Tension	1
-7	103202	LOCKWASHER	2
-8	60202	NUT	2
-9	60156	SCREW	1
-10	60158	SCREW	1
-11	60153	SPRING, Breaker Box Cover	1
-12	60151	SPRING, Wedge	1
-13	60143	STATOR PLATE	1
-14	60157	STUD, Connection	1
-15	60152	WIPER, Felt	1
107	62209	SWITCH, On-Off, Toggle	1
108	61640	TANK ASSY., Oil	1
109	61510	THUMBPIECE, Oiler	1
110	61195	TRIGGER, Throttle	1
112	60969	WASHER, Chain Adjusting	1
113	62187	WASHER, Guide Bar	2
114	103607	WASHER, Ignition Mtg.	2
115	60084	WASHER, Outer Race	4
116	103611	WASHER, Shield	1
117	60062	WASHER, Thrust	1
117A	64055	WASHER, Spark Plug	1
118	60074A	WIRE, Throttle	1

Key Numbers Not Used: 1, 33, 50, 56, 72, 75, & 111.

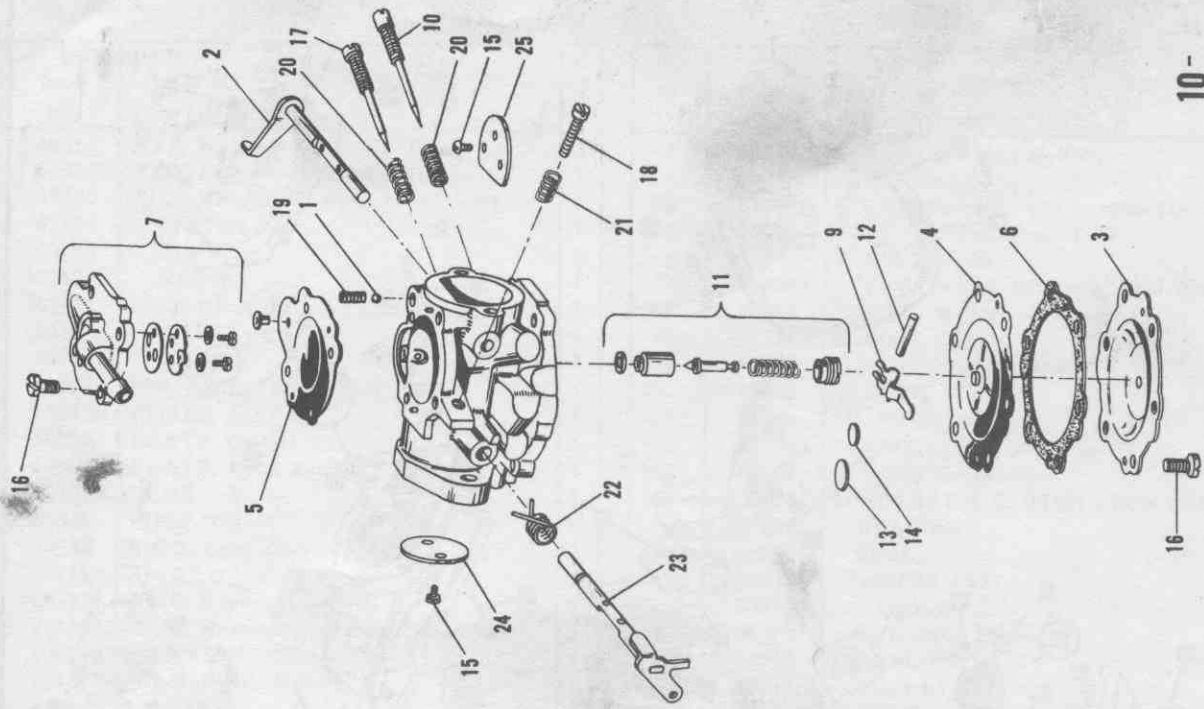
BANTAM CHAIN SAW ACCESSORIES

No. 18347 Lubricant, Roller Nose	No. 61340 Bumper
No. 35219 Round Cutter File 7/32" Dia.	No. 60111 Combination Wrench
No. 48520 Roller Nose (2-1/2" Dia.)	No. 60736 Combination Wrench
No. 48535 Depth Gauge Sharpening Guide	No. 65298 Sticker
No. 60729 Grease Gun	No. 48411 Remington Chain Saw Oil
No. 60730 Grease Gun Tip	No. 14207 Handle, File
No. 61319 File Guide (New)	No. 61770 Chain Breaker and Spinner
No. 48880 File Guide	No. 60833 1-1/2" Spanner Wrench

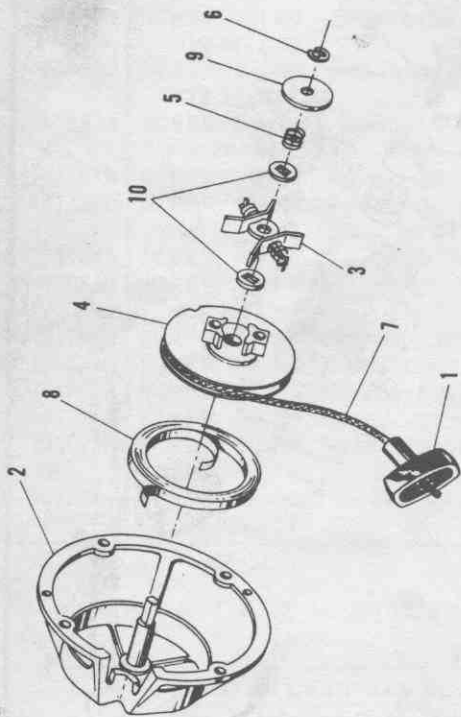


○ Indicates assembly. See next page for exploded view of that assembly.

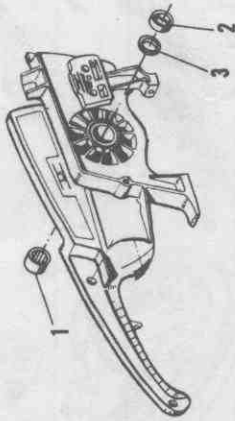
DO NOT USE KEY NUMBERS WHEN ORDERING SERVICE PARTS. ALWAYS USE PART NUMBERS PER ILLUSTRATED PARTS LIST.



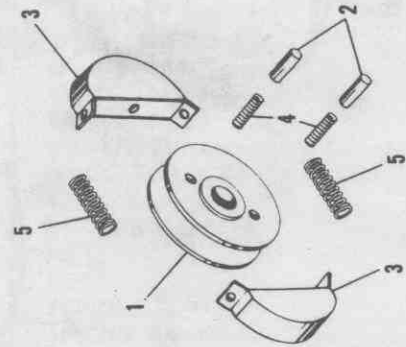
10-



105-



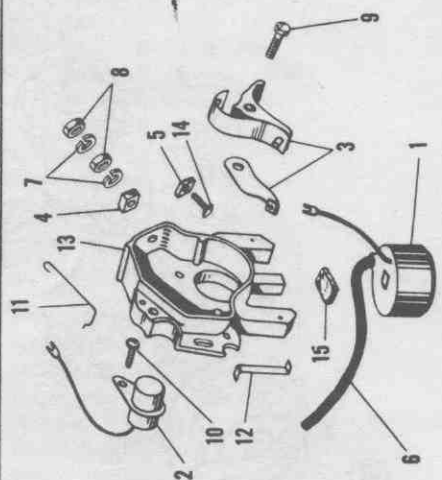
16-



13-



15-



106-