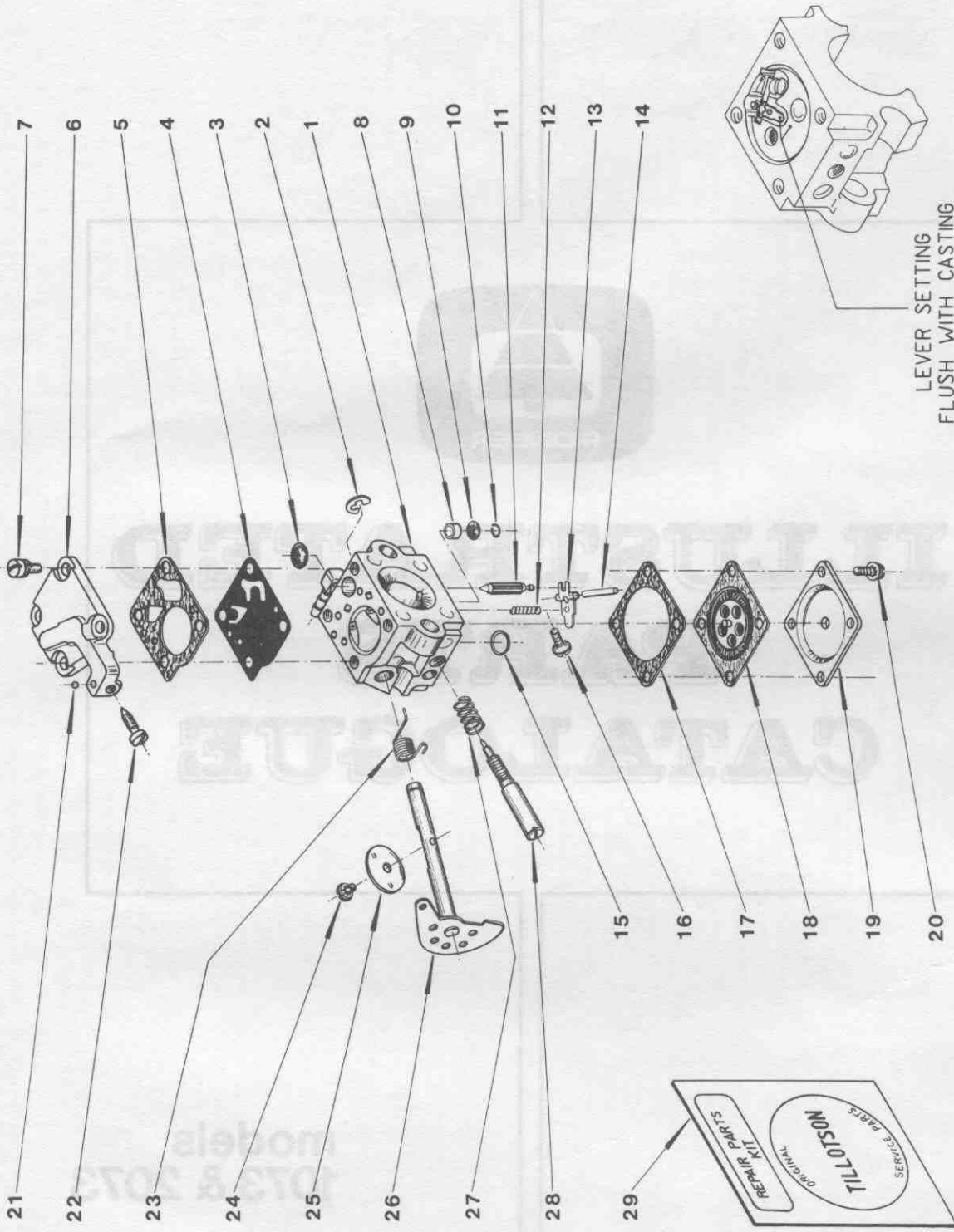




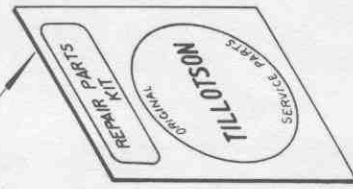
ILLUSTRATED PARTS CATALOGUE

models
1073 & 2073





LEVER SETTING
FLUSH WITH CASTING

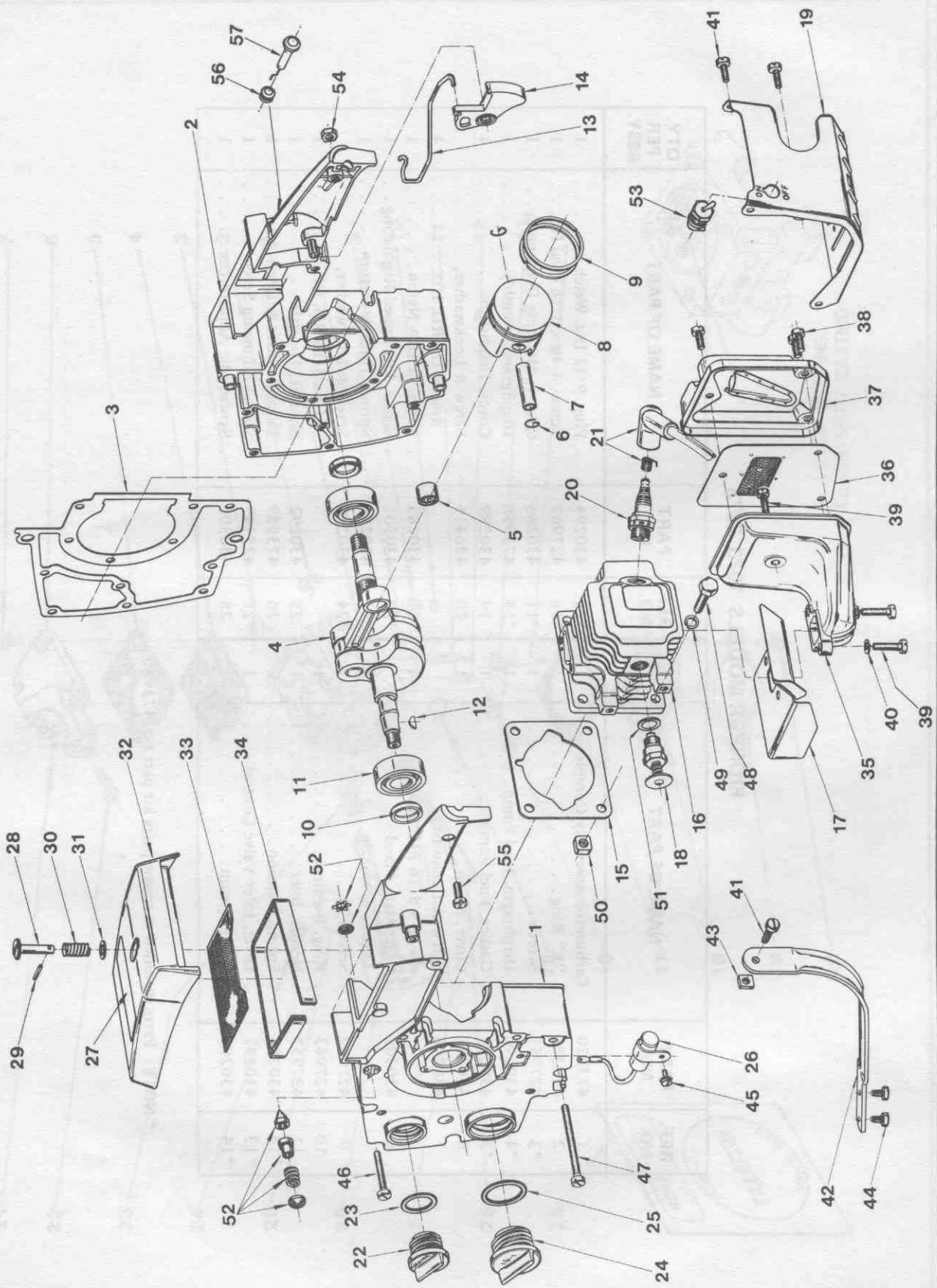


PIONEER MODELS 1073, 2073

REF. NO.	PART NO.	NAME OF PART	QTY. PER ASSY.	REF. NO.	PART NO.	NAME OF PART	QTY. PER ASSY.
1	473870	Carburetor Assembly Complete	1	*15	430294	Plug, 9/32 Dia. Welch	1
2	430281	"E" Ring	1	*16	427962	Screw, 4-40 x 5/16 Oval Hd.	1
*3	427951	Screen	1	*17	430288	Gasket, Metering Diaphragm	1
*4	430290	Diaphragm, Fuel Pump	1	*18	473958	Diaphragm Assembly	1
*5	430291	Gasket, Fuel Pump	1	19	430289	Cover, Diaphragm	1
6	430298	Cover, Pump	1	20	426415	Screw & Lockwasher, 4-40 x 1/4 RD. HD.	4
7	430296	Screw & Lockwasher (6-32 x 5/16 FIL. HD.)	4	21	430285	Ball 3/32 DIA Nylon	1
8	430302	Cage, Main Fixed Orifice & Nozzle	1	*22	430301	Screw, Idle Sped Regulating	1
9	427942	Screen	1	*23	430299	Spring, Throttle Return	1
10	427943	Ring, Retainer	1	*24	430280	Screw & Lockwasher, 4-40 x 3/16 RD. HD.	1
11	427952	Needle, Inlet	1	25	430292	Shutter, Throttle	1
*12	430293	Spring, Tension	1	26	473959	Throttle Shaft & Lever Assy.	1
*13	430297	Lever, Inlet Valve Control	1	*27	425449	Spring Adjusting Screw	1
*14	430295	Pin, Fulcrum	1	28	430300	Screw, Idle Adjustment	1

* NOTE: Parts included in repair parts kit part no. 473960

INDENTED PART NAMES INDICATE THAT THESE PARTS ARE INCLUDED IN PRECEDING ASSEMBLY
ORDER ALL PARTS FROM YOUR LOCAL AUTHORIZED DEALER



ORDER ALL PARTS FROM YOUR LOCAL AUTHORIZED DEALER
 INCORPORATED PART MAKERS INDICATE THAT THEIR PARTS ARE NOT USED IN REBUILDING KAWASAKI

PIONEER MODELS 1073, 2073

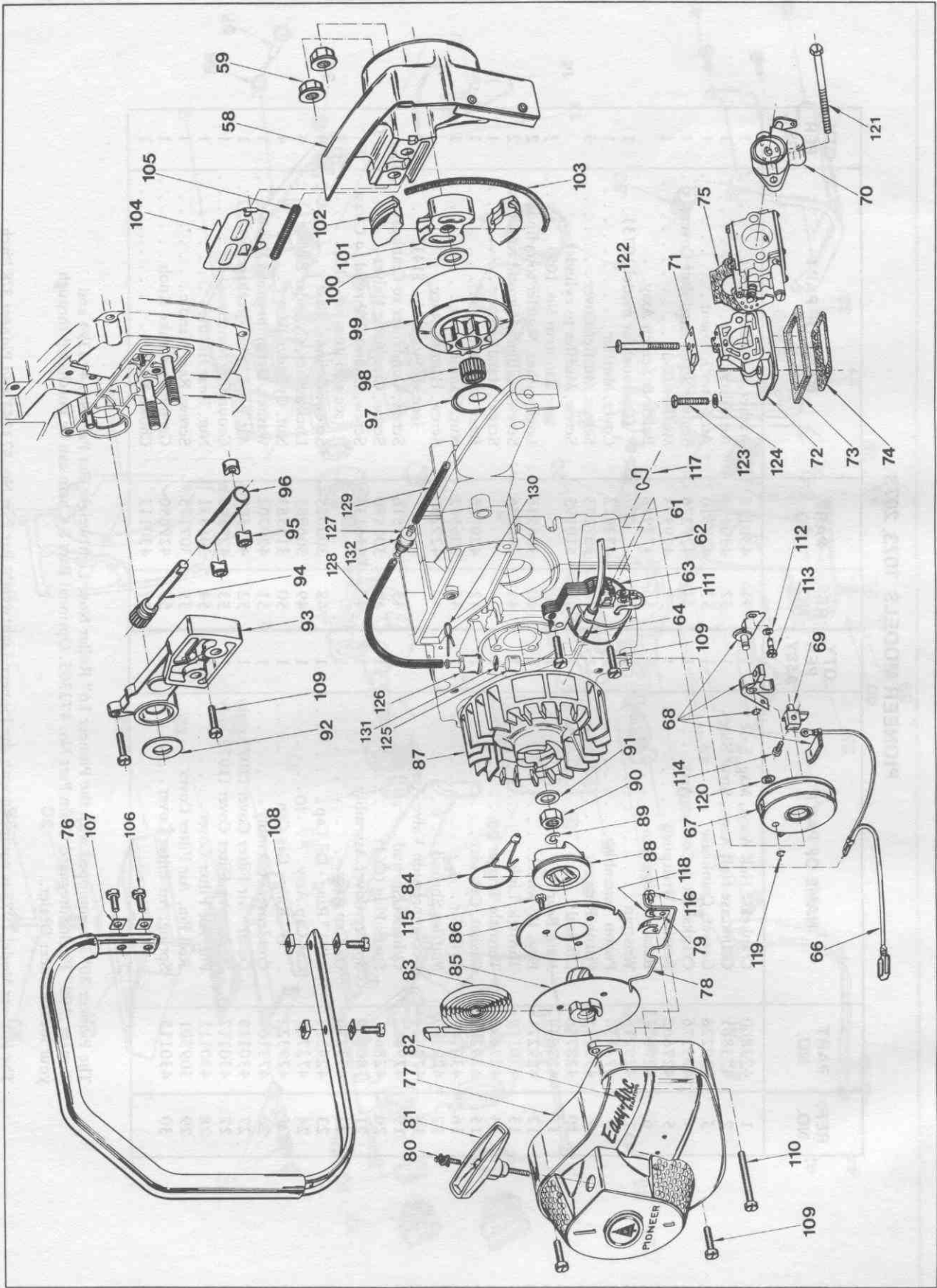
REF. NO.	PART NO.	NAME OF PART	QTY. PER ASSY.	REF. NO.	PART NO.	NAME OF PART	QTY. PER ASSY.
1	473860	Crankcase Half Assy., Mag. Side	1	31	430112	Washer, Air Filter Cover	1
2	473861	Crankcase Half Assy., Strut Side	1	32	430114	Air Filter Cover	1
3	429228	Gasket, Crankcase	1	33	429310	Air Filter Element	1
4	473176	Crankshaft & Conrod Assy.	1	34	429276	Sealing Strip, Air Filter Cover	1
5	427662	Bearing, Wristpin	1	35	429593	Muffler Body	1
6	427671	Retainer, Wristpin	2	36	473916	Baffle & Screen Assy.	1
7	429216	Wristpin	1			(Optional for model 1073)	1
8	473150	Piston Assembly	1	37	473912	Cover, Muffler	1
9	473155	Piston Ring set	1	38	307193	Screw, Muffler Cover	3
10	428746	Oil Seal	2	39	510195	Screw, Muffler to cylinder	3
11	427849	Main Bearing	2			(see also item No. 109)	3
12	429271	Key, Flywheel	1	40	306546	Lockwasher, Muffler to cylinder	2
13	430119	Throttle Link	1	41	306286	Screw, Cylinder Shroud to C'Case	2
14	427696	Throttle Trigger	1			Screw, Handle Brace	1
15	429262	Gasket, Cylinder	1	42	429726	Rear Handle Brace	1
16	430107	Cylinder	1	43	306542	Nut, Handle brace	1
17	429309	Muffler Shroud	1	44	429266	Screw, Handle Brace	1
18	473524	Decompression Valve Assy.	1			(see also item No. 114)	2
19	429852	Cylinder Shroud	1	45	311516	Screw, Condenser to Crankcase	1
20	428601	Spark Plug (C6J)	1	46	307190	Screw, Crankcase Halves	13
21	580339	Sparky Cover Assembly	1	47	316133	Screw, Cylinder Shroud to C'case	1
22	473770	Oil Cap Assy.	1			(see also item no. 110)	1
23	429324	"O" Ring - Oil Cap	1	48	300635	Screw, Cylinder Base	4
24	473769	Gas Cap Assy.	1	49	306985	Lockwasher, Cylinder Base	4
25	429322	"O" Ring - Gas Cap	1	50	315381	Nut, Cylinder Base	4
26	473161	Condenser Assembly	1	51	429702	Washer, Decompression Valve	1
27	430118	Decal - Air Filter Cover (2073 only)	1	52	473589	Air Vent Valve (packaged)	1
27	430117	Decal - Air Filter Cover (1073 only)	1	53	429590	Grounding Switch	1
28	430111	Pin, Air Filter Cover	1	54	306531	Nut, Rear Handle	1
29	309301	Roll Pin, Air Filter Cover	1	55	307175	Screw, Rear Handle	1
30	430115	Spring, Air Filter Cover	1	56	429650	Grommet, Choke Knob	1
				57	430113	Choke Knob	1

The Pioneer 2073 is equipped with the Pioneer 16" Roller Nose Lightweight Bar Part No. 473394 and Pioneer .298" Pitch Sureguard Chain Part No. 473305. Optional Bars & Chain can be purchased through your local Pioneer Dealer.

The Pioneer Model 1073 is equipped with the Pioneer Lightweight Bar Part No. 473141 and Pioneer 3/8 Pitch Sureguard Chain Part No. 471833. Optional Bars & Chain can be purchased through your local Pioneer Dealer.

INDENTED PART NAMES INDICATE THAT THESE PARTS ARE INCLUDED IN PRECEDING ASSEMBLY

ORDER ALL PARTS FROM YOUR LOCAL AUTHORIZED DEALER



ORDER ALL PARTS FROM YOUR LOCAL AUTHORIZED DEALER

PIONEER MODELS 1073, 2073

REF. NO.	PART NO.	NAME OF PART	QTY. PER ASSY.	REF. NO.	PART NO.	NAME OF PART	QTY. PER ASSY.
58	473619	Stut Assembly	1	99	473156	Sprocket & Clutch Drum Assy. with bearing (model 1073 only).	1
59	429903	Flange Nut	2	100	429252	Thrust Washer, Outer Clutch	1
61	473341	Core Assembly	1	101	429250	Clutch Driver	1
62	427745	H.T. Lead	1	102	429251	Clutch Shoe	2
63	473340	Coil with H.T.	1	103	426964	Garter Spring	1
64	429422	Retainer	1	104	429580	Chain Adjuster (model 2073 only)	1
66	473627	Switch Wire Assembly	1	105	429581	Spring, Chain Adj. (model 2073 only)	1
67	429929	Ignition Cover	1	106	510338	Screw, Front Handle	4
68	473750	Breaker Point Set with Wiper	1	107	429472	Washer, Front Handle	4
69	429925	Terminal Block	1	108	306542	Nut, Front Handle	2
70	473858	Blowback Tube & Choke Assy.	1	109	510195	Screw, Bar Pad to Crankcase	2
71	430110	Bracket, Air Filter Cover	1			Screw, Blower Cover to C'case	2
*		Insulating Block Assy. Complete	1			Screw, Blower Cover to C'case	2
72	430105	● Insulating Block	1	110	316133	Screw, Coil Lamination	2
73	429305	● Seal - Insulating Block	1			(see also item No. 39)	
74	430102	● Gasket - Cyl. to Intake	1			Screw, Blower Cover to C'case	
75	430103	● Gasket - Insulating Bl. to Carb.	1			(see also item no. 47)	
76	473175	Front Handle Assembly	1	111	300154	Washer, Lamination	1
77	473635	Blower Cover & Screen Assy.	1	112	303497	Washer, Base Breaker Plate	1
78	429573	Lever, Decompression Valve	1	113	429928	Screw, Base Breaker Plate	1
79	429575	Spring, Lever	1	114	429266	Screw, Terminal	1
80	429278	Starter Rope	1			(see also item no. 44)	
81	429549	Starter Handle	1	115	602821	Screw, Plate, Pulley	3
82	429584	Decal "Easy * Arc"	1	116	309467	Screw, Decompression Valve	2
83	604257	Starter Spring	1	117	430052	Clip Assy., H.T. Lead	1
84	473637	Yoke Assy.	1	118	308507	Washer, Decompression	1
85	429242	Starter Pulley	1	119	202755	Retaining Ring, Breaker Pin	1
86	429243	Plate, Pulley	1	120	429927	Seal, Breaker Housing	1
87	473160	Flywheel Assembly	1	121	318521	Screw, Carburetor	2
88	429892	Pinion	1	122	316781	Screw, Insulating Block	1
89	429246	Retaining Ring	1	123	305879	Screw, Insulating Block	1
90	404837	Nut, Flywheel	1	124	305863	Washer, Insulating Block	1
91	429851	Washer, Flywheel	1	125	473459	Fuel Pick-up Assembly	1
92	427917	Seal Washer	1	126	425670	Felt - Pickup	1
93	429724	Bar Pad	1	127	473772	Connector ass'y.-Pickup Head to Tank Wall	1
94	473166	Plunger Assembly, Oil Pump	1	128	429677	Fuel Line - Pickup Head	1
95	429274	Spacer, Oil Pump	3	129	430106	Fuel Line - Tank to Carb.	1
96	473869	Pump Sleeve Assy., Oil Pump	1	130	429471	Clamp	1
97	429672	Thrust Washer, Inner Clutch	1	131	429530	Screen - Fuel - Pickup	1
98	429526	Bearing, Clutch	1	132	305857	"O" Ring - Connector	1
99	473447	Sprocket & Clutch Drum Assy. (.298 with bearing(model 2073 only)	1				

* NOT SHOWN

INDENTED PART NAMES INDICATE THAT THESE PARTS ARE INCLUDED IN PRECEDING ASSEMBLY
ORDER ALL PARTS FROM YOUR LOCAL AUTHORIZED DEALER